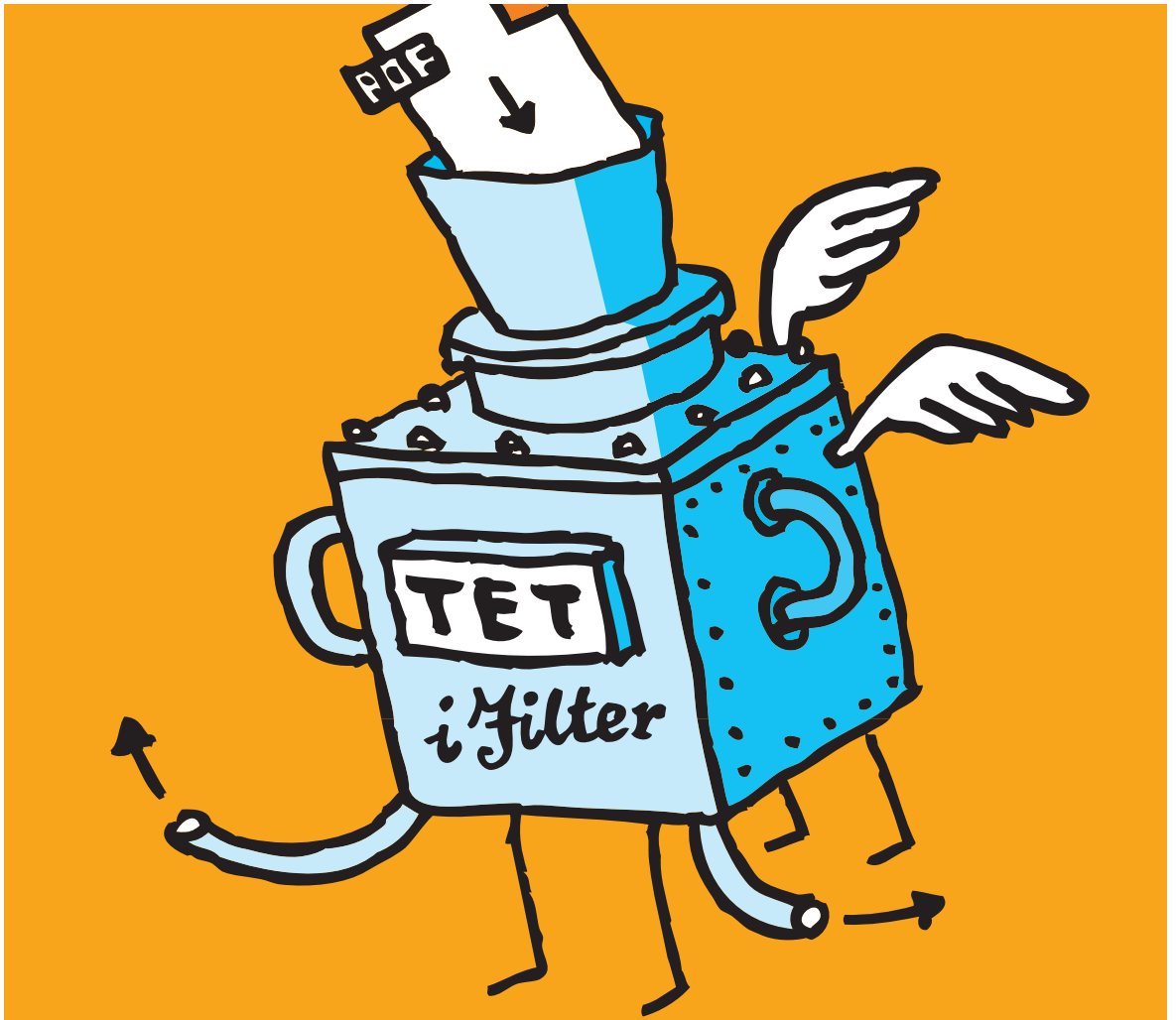


# TET PDF IFilter

Version 4.0

Enterprise PDF Search for Windows



Copyright © 1997–2010 PDFlib GmbH and Thomas Merz. All rights reserved.  
Protected by European and U.S. patents.

PDFlib GmbH  
Franziska-Bilek-Weg 9, 80339 München, Germany  
www.pdflib.com  
phone +49 • 89 • 452 33 84-0  
fax +49 • 89 • 452 33 84-99

If you have questions check the PDFlib mailing list and archive at [tech.groups.yahoo.com/group/pdflib](http://tech.groups.yahoo.com/group/pdflib)

Licensing contact: [sales@pdflib.com](mailto:sales@pdflib.com)  
Support for commercial PDFlib licensees: [support@pdflib.com](mailto:support@pdflib.com) (please include your license number)

*This publication and the information herein is furnished as is, is subject to change without notice, and should not be construed as a commitment by PDFlib GmbH. PDFlib GmbH assumes no responsibility or liability for any errors or inaccuracies, makes no warranty of any kind (express, implied or statutory) with respect to this publication, and expressly disclaims any and all warranties of merchantability, fitness for particular purposes and noninfringement of third party rights.*

*PDFlib and the PDFlib logo are registered trademarks of PDFlib GmbH. PDFlib licensees are granted the right to use the PDFlib name and logo in their product documentation. However, this is not required.*

*Adobe, Acrobat, PostScript, and XMP are trademarks of Adobe Systems Inc. AIX, IBM, OS/390, WebSphere, iSeries, and zSeries are trademarks of International Business Machines Corporation. ActiveX, Microsoft, OpenType, and Windows are trademarks of Microsoft Corporation. Apple, Macintosh and TrueType are trademarks of Apple Computer, Inc. Unicode and the Unicode logo are trademarks of Unicode, Inc. Unix is a trademark of The Open Group. Java and Solaris are trademarks of Sun Microsystems, Inc. HKS is a registered trademark of the HKS brand association: Hostmann-Steinberg, K+E Printing Inks, Schmincke. Other company product and service names may be trademarks or service marks of others.*

*TET PDF IFilter contains modified parts of the following third-party software:  
Zlib compression library, Copyright © 1995-2002 Jean-loup Gailly and Mark Adler  
TIFFlib image library, Copyright © 1988-1997 Sam Leffler, Copyright © 1991-1997 Silicon Graphics, Inc.  
Cryptographic software written by Eric Young, Copyright © 1995-1998 Eric Young ([ey@cryptsoft.com](mailto:ey@cryptsoft.com))  
Independent JPEG Group's JPEG software, Copyright © 1991-1998, Thomas G. Lane  
Cryptographic software, Copyright © 1998-2002 The OpenSSL Project ([www.openssl.org](http://www.openssl.org))  
Expat XML parser, Copyright © 1998, 1999, 2000 Thai Open Source Software Center Ltd  
ICU International Components for Unicode, Copyright © 1995-2009 International Business Machines Corporation and others  
Compact Language Detection, Copyright © 2010 The Chromium Authors. All rights reserved.*

*TET PDF IFilter contains the RSA Security, Inc. MD5 message digest algorithm.*



# Contents

## o Installing TET PDF IFilter 5

### 1 Getting Started 7

- 1.1 Windows Search 7
- 1.2 SharePoint 10
- 1.3 Search Server 12
- 1.4 SQL Server 13
- 1.5 Indexing Service 16

### 2 Indexing PDF Contents 19

- 2.1 PDF Document Domains 19
- 2.2 Automatic Language Detection 24
- 2.3 PDF Versions and Protected Documents 27
- 2.4 Unicode Postprocessing 28
  - 2.4.1 Unicode Folding 28
  - 2.4.2 Unicode Decomposition 30
  - 2.4.3 Unicode Normalization 33
- 2.5 Custom Glyph Mapping Tables 35

### 3 Metadata Properties 37

- 3.1 Sources of Metadata in PDF 37
- 3.2 Metadata Organization 40
- 3.3 Predefined Metadata Properties 41
- 3.4 Custom Metadata Properties 42
- 3.5 Multivalued Properties 44
- 3.6 Indexing Metadata Properties as Text 45
- 3.7 Metadata in Windows Search 47
- 3.8 Metadata in SharePoint and Search Server 53
- 3.9 Metadata in SQL Server 58
- 3.10 Metadata in Indexing Service 59

### 4 XML Configuration File 63

- 4.1 Working with Configuration Files 63
- 4.2 XML Elements and Attributes 65
- 4.3 Sample Configuration File 69

### 5 Troubleshooting 71

- 5.1 TET PDF IFilter does not work at all 71

- 5.2 Problems with TET PDF IFilter Operation 73
- 5.3 PDF Documents are not or not completely indexed 74
- 5.4 Debugging Facilities 76

## **A Predefined Metadata Properties 79**

## **B Revision History 85**

## **Index 87**

# o Installing TET PDF IFilter

TET PDF IFilter is delivered as an MSI installer for Windows systems. All TET PDF IFilter packages contain a signed IFilter DLL plus support files, documentation, and samples. Running the MSI installer requires Administrator privileges. The installer will install and register TET PDF IFilter. Additional steps for specific search environments (e.g. Windows Desktop Search, SharePoint) as well as custom configuration are discussed elsewhere in this manual.

**32-bit and 64-bit versions.** TET PDF IFilter is available for 32-bit and 64-bit platforms. Both versions are available in separate installers, and can be installed on the same system in parallel if required. The 64-bit version is a native 64-bit implementation which works only with 64-bit executables. While the 64-bit installer will refuse to install on 32-bit systems, the 32-bit version works on both 32-bit and 64-bit systems.

**Applying the TET PDF IFilter license key.** Using TET PDF IFilter for production purposes on a server system requires a valid license key. Once you purchased a TET PDF IFilter license you must apply your license key in order to allow processing of arbitrarily large documents. Generally, you will enter the license key when installing TET PDF IFilter with the MSI installer. However, you can also manually apply the license key in the registry after installation (see »Manual installation«, page 6). 32-bit and 64-bit versions accept the same license keys.

Use the license key 0 (zero) to install the evaluation version on a server system, or to install the free desktop version for non-commercial use.

**Restrictions of the evaluation version.** The TET PDF IFilter can be used as fully functional evaluation version even without a commercial license. Unlicensed versions support all features, but will only process PDF documents with up to 10 pages and 1 MB size. Evaluation versions of TET PDF IFilter must not be used for production purposes, but only for evaluating the product. Using TET PDF IFilter for production purposes requires a valid license.

**Free desktop version for non-commercial use.** TET PDF IFilter for desktop systems, i.e. Windows 2000/XP/Vista/7 may freely be used for personal use, i.e. non-commercial purposes. Deploying the desktop version in any situation which can be considered commercial use requires a commercial license, though.

TET PDF IFilter for server operating systems, i.e. Windows Server 2003/2008 always requires a commercial license.

**Supported IFilter clients.** TET PDF IFilter implements Microsoft's IFilter interface. A variety of indexing products support the IFilter interface. In this documentation such products are called IFilter clients. TET PDF IFilter has been tested with the following products, but may also work with other Microsoft and third-party products which support the IFilter interface:

- ▶ Windows Search is integrated in the Explorer of Windows Vista and Windows 7; also available as a free add-on for Windows XP
- ▶ Indexing Service

- ▶ Windows SharePoint Services 3.0, SharePoint Portal Services 2003, Office SharePoint Server 2007, SharePoint Server 2010
- ▶ SQL Server 2005, SQL Server 2008
- ▶ Search Server 2008 and Search Server Express 2008, Search Server 2010 and Search Server Express 2010
- ▶ Exchange Server 2007
- ▶ Site Server

TET PDF IFilter is available in 32-bit and 64-bit versions. The 64-bit version of the IFilter works with 64-bit versions of the products above.

**Manual installation.** While the installer applies all steps required to use TET PDF IFilter you may need to apply certain steps manually in some situations. Refer to the following information in this case.

To add the license key manually enter it at the following registry value:

```
HKEY_LOCAL_MACHINE\SOFTWARE\PDFlib\TET PDF IFilter4\license
```

To register the TET PDF IFilter DLL in the system (to make sure it will be found by IFilter clients) run the following command (possibly modified for a different installation directory) in a console window:

```
regsvr32 "C:\Program Files\PDFlib\TET PDF IFilter 4.0\bin\TETPDFIFilter.dll"
```

*Note Please read the section »Running privileged commands on Windows Vista/7«, page 6 (below) if you are working on Windows Vista.*

If there are IFilter clients which were already using TET PDF IFilter, make sure to stop all related services which access TET PDF IFilter before registering the DLL again. Also, make sure that the Windows event log is closed.

**Running privileged commands on Windows Vista/7.** On Windows Vista/7 write access to the registry (e.g. by the *regsvr32* and *registerpropdesc* programs) requires administrator privileges. You can launch a command prompt with administrator privileges as follows: click on Start, right-click the *Command Prompt* entry, and select *Run as administrator*. This will trigger the UAC prompt, and after confirmation a command prompt will open which runs with administrator privileges.

# 1 Getting Started

This chapter describes the initial steps required to configure and use some of the search and retrieval products (IFilter clients) supported by TET PDF IFilter. This description is intended to get you up and running with TET PDF IFilter. Advanced configuration aspects are discussed in Chapter 3, »Metadata Properties«, page 37. The full TET PDF IFilter installation includes a set of sample PDF documents which can be used for testing the installation and getting familiar with its powerful metadata features.

## 1.1 Windows Search


**System requirements.** Windows Desktop Search (WDS) 3 and its successor Windows Search replace the legacy Indexing Service. It brings performance and extensibility advantages and supports a new property system for metadata which is fully supported by TET PDF IFilter. Availability of WDS depends on the version of the operating system:

- ▶ WDS 2 is available for Windows XP. The older version WDS 2.6.5 supports a subset of WDS 3 features. TET PDF IFilter works with all these flavors.
- ▶ WDS 3 is integrated in Windows Vista; WDS 3.01 is available as a free add-on for the 32-bit and 64-bit versions of Windows XP SP2 and Windows Server 2003 SP1.
- ▶ Windows Search 4 is available for Windows Vista/7, the 32-bit and 64-bit versions of Windows XP SP2 and Windows Server 2003 SP2, and Windows Server 2008.

For details see

[www.microsoft.com/windows/products/winfamily/desktopsearch/choose/windowssearch4.mspx](http://www.microsoft.com/windows/products/winfamily/desktopsearch/choose/windowssearch4.mspx)

**Setup and configuration.** By default, Windows Desktop Search indexes documents in the *My Documents* folder. You can instruct WDS to index documents in other locations (including network drives) as follows:

- ▶ In the notification area of the Windows taskbar, right-click the indexing icon .
- ▶ Click *Windows Search Options...*, and then click *Modify*.
- ▶ In the *Change selected locations* section, select the locations that you want, and then click OK.
- ▶ Right-click the indexing icon again, and click *Index Now* to force the documents to be indexed immediately.

**Starting/Stopping Windows Desktop Search.** You can start and stop the search service (more precisely: the indexing process which in turn calls TET PDF IFilter) manually with the following methods:


- ▶ In a console window type the following to start the service:

```
net start wsearch
```

Type the following to stop the service:

```
net stop wsearch
```

- ▶ To control the service in the control panel:  
Click on *Start, Settings, Control Panel, Administrative Tools, Computer Management*. Navigate to *Services and Applications, Services*. Locate *Windows Search* in the list of available services. Double-click on the service name to bring up a dialog which offer *Start/Stop* and other controls.

- ▶ To rebuild the catalog:  
Right-click the indexing icon  and click *Windows Search Options..., Advanced, Rebuild*. This will re-index all documents.


Note that WDS will automatically start the indexing service in certain situations.

**Simple text search.** You can use several methods to search for text:

- ▶ WDS displays the deskbar search box in the Windows taskbar next to the notification area. Type the search words into this search box and press *Enter*.
- ▶ You can bring up a separate search window by clicking *Start, Search, For Files or Folders*.
- ▶ In a Windows Explorer Windows press the *Search* button at the top.

Regardless of the method you choose you can type search terms in the corresponding window, and WDS will display a hit list of documents which contain the search term (if any). If a PDF viewer (e.g. Adobe Acrobat or Adobe Reader) is installed on the system the contents of the selected document will be displayed in the results window.

**Advanced text search.** In addition to typing simple search terms you can use advanced query operators to narrow your search. Table 1.1 contains some examples. A comprehensive list of syntax elements for advanced queries is available in the following locations:

- ▶ In the notification area of the Windows taskbar, right-click the indexing icon , and click *Help, Advanced Query Syntax*.
- ▶ On the Web at  
[www.microsoft.com/windows/products/winfamily/desktopsearch/technicalresources/advquery.msp](http://www.microsoft.com/windows/products/winfamily/desktopsearch/technicalresources/advquery.msp)

See Section 3.7, »Metadata in Windows Search«, page 47, for metadata queries.

Fig. 1.1.  
Configuring Windows Desktop Search

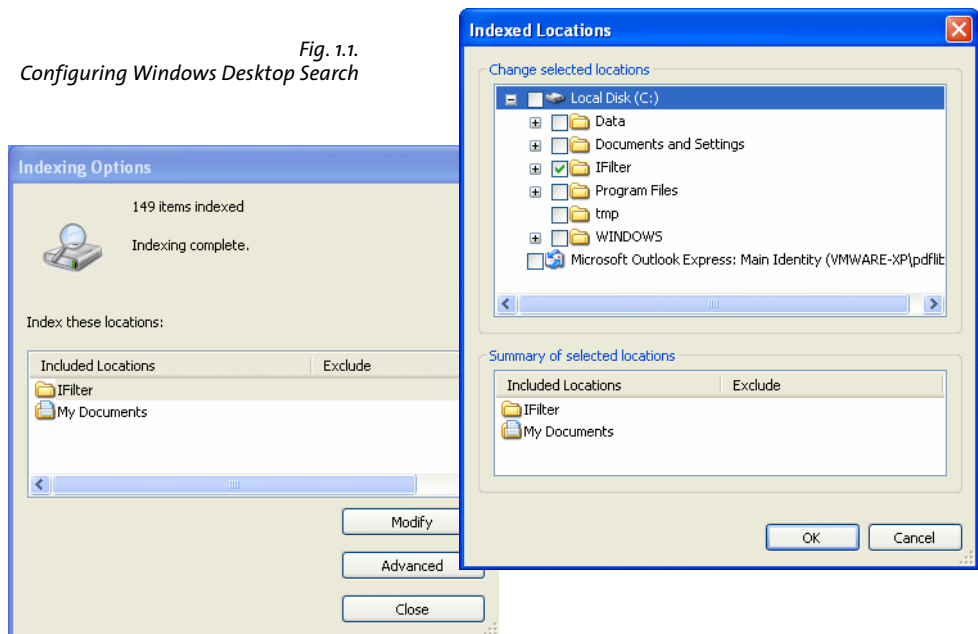


Table 1.1 Query syntax examples for Windows Search 3.0 and above

Search term example	Explanation
<i>Hol</i>	<i>document contents or any property contain words starting with Hol</i>
<i>Holmes AND Watson</i> <i>Holmes + Watson</i> <i>Holmes Watson</i> <i>(Holmes Watson)</i>	<i>document contents contain both Holmes and Watson</i>
<i>"Sherlock Holmes"</i>	<i>document contents contain the exact phrase Sherlock Holmes</i>
<i>Holmes OR Watson</i>	<i>document contents contain either Holmes or Watson</i>
<i>Holmes NOT Mowgli</i> <i>Holmes -Mowgli</i>	<i>document contents contain the term Holmes, but not the term Mowgli</i>

**Programmatically querying the index.** In addition to interactive queries you can also query the WDS index programmatically. Accessing the search index can be accomplished via the ADO (*ActiveX Data Objects*) interface and SQL syntax extensions which present the search index through a database-like programming interface. More details on programmatically querying the index can be found at

[msdn.microsoft.com/en-us/library/bb266517\(VS.85\).asp](http://msdn.microsoft.com/en-us/library/bb266517(VS.85).asp)

See »SQL queries for metadata properties«, page 50, for WDS metadata queries with SQL.

**Limitations.** In our testing we ran into the following intrinsic limitations of WDS:

- ▶ The generated catalog entry for a document will not exceed a size of ca. 1 MB. If a document creates larger catalog entries WDS will ignore the remaining text. At a typical size of ca. 3KB text per page this amounts to more than 300 pages of text. However, there is not a strict limit so the results may vary. The only known workaround for this limitation in WDS is to split large documents into multiple smaller parts.
- ▶ PDF documents will not be indexed as long as they are opened in Acrobat. We recommend to close Acrobat before creating the search index.
- ▶ Searching for custom metadata properties interactively does not work, while programmatic searches (e.g. with PowerShell) do work.

## 1.2 SharePoint

**System requirements.** TET PDF IFilter works with the following SharePoint editions:

- ▶ Microsoft Office SharePoint Server 2007 (also called MOSS)
- ▶ SharePoint Portal Server 2003
- ▶ SharePoint Server 2010, SharePoint Foundation 2010
- ▶ Windows SharePoint Services 3.0

You can find more information about SharePoint at [msdn.microsoft.com/en-us/sharepoint/default.aspx](http://msdn.microsoft.com/en-us/sharepoint/default.aspx)

**Setup and configuration.** Proceed as follows to configure TET PDF IFilter for use with SharePoint:

- ▶ Install TET PDF IFilter from the MSI package.
- ▶ Open the SharePoint administration web page: *Start, All Programs, Microsoft Office Server, SharePoint 3.0 Central Administration*.
- ▶ This will open a web page *Shared Services Administration: SharedServices1*. Under *Search*, click on *Search Settings*. Click on *File Types*.
- ▶ On the page that opens click *New File Type*, and create *pdf* file extension.
- ▶ Optionally configure a PDF file icon as described in the next section.

**Add a PDF file icon.** In order to visually represent PDF documents in the result list of a SharePoint query you can configure a PDF icon. This icon will be displayed for PDF documents. Proceed as follows:

- ▶ Download the PDF icon from

[www.adobe.com/misc/linking.html#pdficon](http://www.adobe.com/misc/linking.html#pdficon)

and save it as *pdficon\_small.gif*.

- ▶ For SharePoint Server 2010 and SharePoint Foundation 2010 copy the icon to the following directory:

C:\Program Files\Common Files\Microsoft Shared\Web Server Extensions\14\TEMPLATE\IMAGES

For SharePoint Server 2007 and Windows SharePoint Services 3.0 copy the icon file to the following directory:

C:\Program Files\Common Files\Microsoft Shared\Web Server Extensions\12\Template\Images

For SharePoint Portal Server 2003 copy the icon file to the following directory:

C:\Program Files\Common Files\Microsoft Shared\Web Server Extensions\60\Template\Images

- ▶ For SharePoint Server 2010 and SharePoint Foundation 2010 load the *Docicon.xml* configuration file in the following directory in a text editor:

C:\Program Files\Common Files\Microsoft Shared\Web Server Extensions\14\TEMPLATE\XML

For SharePoint Server 2007 and Windows SharePoint Services 3.0 load the *Docicon.xml* configuration file in the following directory in a text editor:

C:\Program Files\Common Files\Microsoft Shared\Web server extensions\12\Template\Xml

For SharePoint Portal Server 2003 load the *Docicon.xml* configuration file in the following directory in a text editor:

C:\Program Files\Common Files\Microsoft Shared\Web server extensions\60\Template\Xml

- ▶ Add the following line as a sub-element of the `<ByExtension>` element:

```
<Mapping Key="pdf" Value="pdficon_small.gif"/>
```

- ▶ Restart the IIS Web server.

**Simple and advanced text search.** Several methods are available for building search queries in SharePoint:

- ▶ Query keywords
- ▶ SQL queries
- ▶ Queries encoded in URLs

For more information see

[msdn.microsoft.com/en-us/library/ms497338.aspx](http://msdn.microsoft.com/en-us/library/ms497338.aspx)

See Section 3.8, »Metadata in SharePoint and Search Server«, page 53, for metadata queries.

## 1.3 Search Server

**System requirements.** TET PDF IFilter works with the following editions of Search Server:

- ▶ Search Server 2008 and Search Server 2008 Express
- ▶ Search Server 2010 and Search Server 2010 Express

You can find more information about Search Server at [www.microsoft.com/enterprisesearch/serverproducts/default.aspx](http://www.microsoft.com/enterprisesearch/serverproducts/default.aspx)

**Setup and configuration.** Search Server configuration is very similar to SharePoint configuration. Proceed as follows to configure TET PDF IFilter for use with Search Server:

- ▶ Install TET PDF IFilter from the MSI package.
- ▶ Open the Search administration web page: *Start, All Programs, Microsoft Search Server, Search Server 2008 Administration*.
- ▶ This will open a web page *Search Administration*. Under *Crawling*, click on *File Types*.
- ▶ On the page that opens click *New File Type*, and create *pdf* file extension.
- ▶ Optionally configure a PDF file icon as described for SharePoint in »Add a PDF file icon«, page 10.

**Simple and advanced text search.** Configuring queries in Search Server works the same way as in SharePoint. For more information see [msdn.microsoft.com/en-us/library/aa981100.aspx](http://msdn.microsoft.com/en-us/library/aa981100.aspx).

## 1.4 SQL Server

**System requirements.** TET PDF IFilter works with the following editions of SQL Server:

- ▶ SQL Server 2005 Workgroup, Standard, and Enterprise editions
- ▶ SQL Server 2005 Express Edition
- ▶ SQL Server 2008

You can find more information about SQL Server at

[msdn.microsoft.com/en-us/library/bb418498.aspx](http://msdn.microsoft.com/en-us/library/bb418498.aspx)

More information about full-text search in SQL Server 2005 can be found at

[msdn.microsoft.com/en-us/library/ms142571.aspx](http://msdn.microsoft.com/en-us/library/ms142571.aspx)

**Setup and configuration.** In order to give you full control over the use of filters in SQL Server, the installer does not automatically register TET PDF IFilter in any instance of SQL Server. Instead, you must manually register TET PDF IFilter according to the steps below. Regardless of the selected method, you must configure the IFilter separately for all instances of SQL Server. Two different configuration methods are available which are detailed below.

**Details for configuration method 1.** This method instructs SQL Server to access IFilters which are installed system-wide. Since the installer of TET PDF IFilter registers the IFilter DLL in the system, this is a convenient method for evaluation. However, it creates a dependency on system settings and should therefore be used with caution in production environments. Proceed as follows:

- ▶ Install TET PDF IFilter from the MSI package.
- ▶ Run SQL Server Management Studio and execute the following statement to make the system-wide document filters available to this instance of SQL Server:

```
exec sp_fulltext_service 'load_os_resources', 1;  
GO
```

**Details for configuration method 2.** This method configures TET PDF IFilter for a particular instance of SQL Server without any system dependencies. It requires more steps than method 1, but provides more control for production systems. Proceed as follows:

- ▶ Install TET PDF IFilter from the MSI package. This step will not register the IFilter with SQL Server, but is required to make sure that the IFilter license key will be available in the registry.
- ▶ Identify the instance number from the instance name by navigating to the following key in the registry:

```
HKLM\SOFTWARE\Microsoft\Microsoft SQL Server\Instance Names
```

For example, the instance called SQL will have the following entry:

```
HKLM\SOFTWARE\Microsoft\Microsoft SQL Server\Instance Names\SQL  
"MSSQLSERVER"="MSSQL.1"
```

This means that the instance called SQL uses the directory *MSSQL.1* in the next step.

- ▶ Locate the TET PDF IFilter DLL, which can be found at a path similar to the following:

```
C:\Program Files\PDFlib\TET PDF IFilter 4.0\bin\TETPDFIFilter.dll
```

Copy this DLL to the directory identified in the previous step which contains the binaries for the target instance of SQL Server, e.g.:

```
C:\Program Files\Microsoft SQL Server\MSSQL.1\MSSQL\Binn
```

Make sure to use the proper instance directory instead of *MSSQL.1*.

- ▶ Create the following key in the registry:

```
HKLM\SOFTWARE\Microsoft\Microsoft SQL Server\MSSQL.1\MSSearch\Filters\.pdf
```

Add the class ID of TET PDF IFilter as the default value of this key:

```
{47A1AF35-C345-475d-AE68-EB07E948BD07}
```

- ▶ Create the following key in the registry:

```
HKLM\SOFTWARE\Microsoft\Microsoft SQL Server\MSSQL.1\MSSearch\
  CLSID\{47A1AF35-C345-475d-AE68-EB07E948BD07}
```

Add the following string values for this key:

```
Default value: TETPDFIFilter.dll
```

```
ThreadingModel: Both
```

**Testing the configuration.** With either method you can check the configuration results to make sure that TET PDF IFilter is available for an instance of SQL Server. Use the following statements:

```
SELECT document_type, path FROM sys.fulltext_document_types WHERE document_type = '.pdf'
```

A resulting output line similar to the following indicates that TET PDF IFilter has successfully been configured for the instance (the exact path depends on your installation path and the chosen configuration method):

```
.pdf C:\Program Files\PDFlib\TET PDF IFilter 4.0\bin\TETPDFIFilter.dll
```

**Preparing a database table for full-text PDF indexing.** TET PDF IFilter will be used by SQL Server for creating the full-text index for PDF documents stored in a column of type *varbinary(max)*. Since the document type is not available in this situation, the file extension must be stored in a separate column in the table, the so-called *type column*. The type column can be of any character-based data type. We use *VARCHAR(4)* and store the file extension *pdf*.

The following statements create a *DocumentTable* containing a sample PDF document in the *data* column, the file name in the *name* column, and the associated type in the *extension* column:

```
CREATE DATABASE TestDatabase
GO
USE TestDatabase
GO
CREATE TABLE DocumentTable
(pk INT NOT NULL IDENTITY CONSTRAINT DocumentTablePK PRIMARY KEY,
 data VARBINARY(MAX), name VARCHAR(100), extension VARCHAR(4))
GO
INSERT INTO TestTable(data, name, extension) SELECT *, 'The_Hound_of_the_
Baskervilles.pdf', 'pdf' FROM OPENROWSET(BULK 'C:\Program Files\PDFlib\TET PDF IFilter
4.0\PDF samples\The_Hound_of_the_Baskervilles.pdf', SINGLE_BLOB) AS Document
GO
```

Now you can create the full-text index:

```
sp_fulltext_database 'enable'  
GO  
CREATE FULLTEXT CATALOG TestCatalog AS DEFAULT  
GO  
CREATE FULLTEXT INDEX ON DocumentTable (data TYPE COLUMN extension)  
KEY INDEX DocumentTablePK  
GO
```

**Dropping and recreating the full-text index.** You can use the following statements to drop the full-text index:

```
USE TestDatabase  
GO  
DROP FULLTEXT INDEX ON DocumentTable  
GO
```

Recreate the full-text index:

```
USE TestDatabase  
CREATE FULLTEXT INDEX ON DocumentTable (data TYPE COLUMN extension)  
KEY INDEX DocumentTablePK  
GO
```

**Simple and advanced text search.** You can query for individual words in the full-text index:

```
SELECT name FROM DocumentTable WHERE CONTAINS(*, 'Watson')  
GO
```

In order to search for a phrase consisting of multiple words enclose the phrase in double quotes:

```
SELECT name FROM DocumentTable WHERE CONTAINS(*, "Arthur Conan Doyle")  
GO
```

A sample script for performing these steps with the supplied PDF samples is installed with TET PDF IFilter. More information about the *CONTAINS* predicate in Transact-SQL can be found at

[msdn.microsoft.com/en-us/library/ms187787\(SQL.100\).aspx](http://msdn.microsoft.com/en-us/library/ms187787(SQL.100).aspx)

See Section 3.9, »Metadata in SQL Server«, page 58, for metadata queries.

# 1.5 Indexing Service

**System requirements.** Indexing Service 3.0 is the predecessor of Windows Search, and is an integrated part of Windows NT, Windows 2000, and Windows XP. Although it has been superseded by Windows Desktop Search (WDS) it is still widely used. TET PDF IFilter works with Indexing Service 3. You can find more information about Indexing Service at

*msdn.microsoft.com/en-us/library/aa163263.aspx*

**Setup and configuration.** You can configure Indexing Service via the Management Console (MMC) as follows (see Figure 1.2):

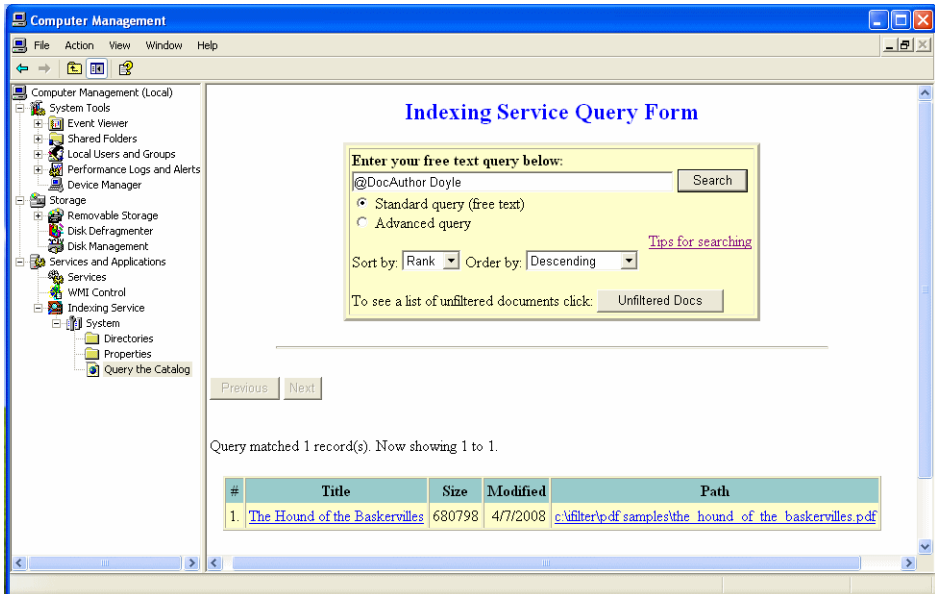
- ▶ Click on *Start, Settings, Control Panel, Administrative Tools, Computer Management*, and navigate to *Services and Applications, Indexing Service, System*.
- ▶ Right-click on *Directories*, select *New..., Directory*, and add a local path or UNC location. If access to the files is restricted, add a suitable user name and password as well.
- ▶ Right-click on *Indexing Service* and make sure that the service runs. If it doesn't, click *Start*.
- ▶ The column *Total Docs* contains the number of documents waiting to be indexed. Once it reaches 0 the catalog is complete and you can query all documents.

**Starting/Stopping Indexing Service.** You can start and stop Indexing Service manually with the following methods:

- ▶ In a console window type the following to start the service:

```
net start CiSvc
```

*Fig. 1.2. Management Console with Indexing Service configuration and query form*



Type the following to stop the service:

```
net stop CiSvc
```

- ▶ To control the service in the control panel:  
Click on *Start, Settings, Control Panel, Administrative Tools, Computer Management*, and navigate to *Services and Applications*. Right-click on *Indexing Service* and select *Start* or *Stop* as appropriate.
- ▶ To force a rebuild of the catalog:  
Stop the Indexing Service as described above. Right-click on *System* and select *All Tasks, Empty Catalog*. Restart the Indexing Service.

**Simple text search.** You can bring up a separate search window by clicking *Start, Search, For Files or Folders*. However, you can also use MMC to test simple and advanced queries:

- ▶ Open MMC (see above) and click on *Indexing Service, System*.
- ▶ Select *Query the Catalog*, and in the main window enter some search terms below the caption *Enter your free text query below* (see Figure 1.2).
- ▶ Click *Search* to create the hit list.

**Advanced text search.** Same as for a simple search (see above), but select *Advanced query* before submitting your query. In the query you can use various operators to narrow down your search. Table 1.2 contains some examples. A description of the query syntax can be found at

[msdn.microsoft.com/en-us/library/ms690538\(VS.85\).aspx](http://msdn.microsoft.com/en-us/library/ms690538(VS.85).aspx)

Use *Advanced query* for queries which involve properties. An overview of property-based queries can be found at

[msdn.microsoft.com/en-us/library/ms690492\(VS.85\).aspx](http://msdn.microsoft.com/en-us/library/ms690492(VS.85).aspx)

See Section 3.10, »Metadata in Indexing Service«, page 59, for metadata queries.

Table 1.2 Query syntax examples for Indexing Service

Search term example	Explanation
<i>Holmes AND Watson</i> <i>Holmes &amp; Watson</i>	<i>document contents contain both Holmes and Watson</i>
<i>"Sherlock Holmes"</i> <i>{phrase} Sherlock Holmes {/phrase}</i>	<i>document contents contain the exact phrase Sherlock Holmes</i>
<i>Holmes OR Watson</i> <i>Holmes   Watson</i>	<i>document contents contain either Holmes or Watson</i>
<i>Holmes NEAR Watson</i> <i>Holmes ~ Watson</i>	<i>document contents contain the terms Holmes and Watson in close proximity (max. 50 words apart)</i>
<i>Holmes AND NOT Mowgli</i>	<i>document contents contain the term Holmes, but not the term Mowgli</i>

**Programmatically querying the index.** Microsoft provides various facilities for programmatically issuing queries with Indexing Service:

- ▶ ADO objects for use with Visual Basic, VBScript etc.
- ▶ ISAPI Extensions for use with *.idq*, *.ida*, and *.htx* files in IIS Web sites

- ▶ OLE DB provider and helper functions for use with Visual C++

The following VBScript samples for programmatically querying the index are installed with TET PDF IFilter:

- ▶ *list\_documents.vbs* queries the *System* catalog and emits a list of PDF documents along with some basic information (file name, size, and number of pages). In a command window you can run it as follows:

```
cscript list_documents.vbs
```

- ▶ *query.vbs* can be used to submit simple or complex queries against the *System* catalog from the command-line. In a command window you can run queries with this script as follows:

```
cscript query.vbs "@DocAuthor Doy*"
```

More information on programmatically querying the index can be found at the following locations:

[msdn.microsoft.com/en-us/library/ms692266\(VS.85\).aspx](http://msdn.microsoft.com/en-us/library/ms692266(VS.85).aspx) (*file-based indexing*)

[msdn.microsoft.com/en-us/library/ms693094\(VS.85\).aspx](http://msdn.microsoft.com/en-us/library/ms693094(VS.85).aspx) (*Web indexing*)

In addition to the Indexing Service query language, SQL extensions can be used to accept query-related terms. For details see

[msdn.microsoft.com/en-us/library/ms691676\(VS.85\).aspx](http://msdn.microsoft.com/en-us/library/ms691676(VS.85).aspx)

# 2 Indexing PDF Contents

## 2.1 PDF Document Domains

PDF documents are much more than just a set of pages: they may contain text in other places, such as annotations and bookmarks, and make use of metadata in Adobe's XMP form or as classical document info entries. The places in a PDF document which may contain text are referred to as PDF document domains. The list below describes all PDF document domains along with notes how to display the corresponding text in Acrobat. The list also contains the default actions of TET PDF IFilter for all document domains. In short, TET PDF IFilter will index the text in all relevant locations. As a result, you may get search hits for documents where it is not obvious at first glance why a hit is produced. Since search term highlighting is generally not available in IFilter clients, it is important to know how to locate the search term in the result documents. Remember that the searched text may be present in a location different from the actual page contents, and refer to the list below if you have trouble locating the search text in a PDF document where TET PDF IFilter reports a search hit.

Notes regarding the descriptions below:

- ▶ Searching »Multiple PDFs« with Acrobat refers to the following kind of search: *Edit, Search* and in the *Look In*: pull-down select a folder of PDF documents.
- ▶ Some of the descriptions refer to the property set collections *documentXMP*, *imageXMP*, *shell*, *pdf*, and *internal*. These can be enabled in the XML configuration file (see Section 3.3, »Predefined Metadata Properties«, page 41). By default, the *shell* and *internal* property set collections are enabled, while the *pdf*, *documentXMP*, and *imageXMP* property set collections are disabled. See Section 3.3, »Predefined Metadata Properties«, page 41, for more details on property set collections.
- ▶ The notation *@indexNestedPdf* refers to an attributes in the XML configuration file (see Section 4.2, »XML Elements and Attributes«, page 65).

**Text on the page.** Page contents are the main source of text in PDF. Text on a page is rendered with fonts and encoded using one of the many encoding techniques available in PDF.

- ▶ How to display with Acrobat 8/9: page contents are always visible
- ▶ How to search a single PDF with Acrobat 8/9: *Edit, Find* or *Edit, Search*. TET PDF IFilter may be able to process the text in documents where Acrobat does not correctly map glyphs to Unicode values. In this situation you can use the TET Plugin. The TET Plugin offers its own search dialog via *Plug-Ins, PDFlib TET Plugin... TET Find*. However, it is not intended as a full-blown search facility.
- ▶ How to search multiple PDFs with Acrobat 8/9: *Edit Search* and in *Where would you like to search?* select *All PDF Documents in*, and browse to a folder with PDF documents.
- ▶ TET PDF IFilter: page contents are always indexed

**Predefined document info entries.** Classical document info entries are key/value pairs.

- ▶ How to display with Acrobat 8/9: *File, Properties...*
- ▶ How to search a single PDF with Acrobat 8/9: not available

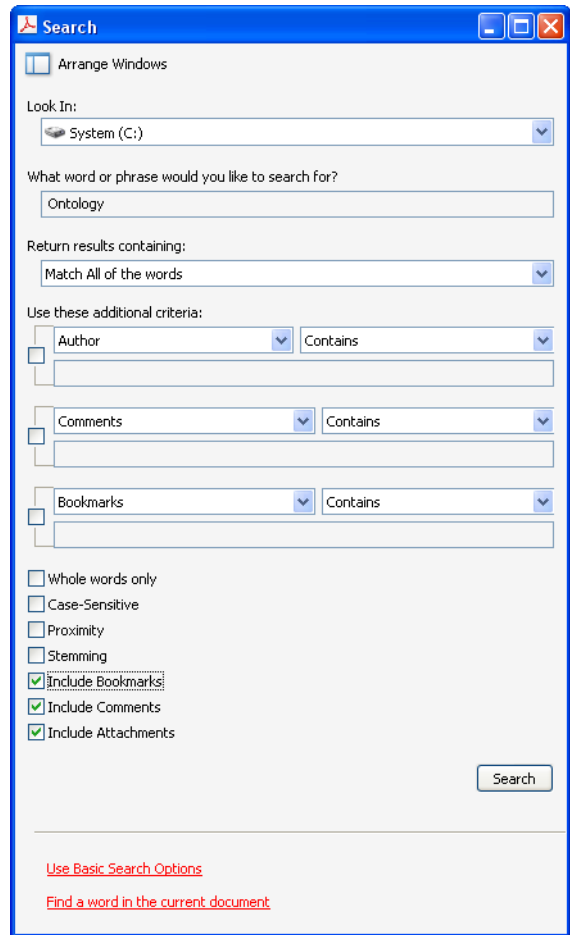


Fig. 2.1  
Acrobat's advanced  
search dialog

- ▶ How to search multiple PDFs with Acrobat 8/9: click *Edit, Search* and *Use Advanced Search Options*. In the *Look In:* pull-down select a folder of PDF documents and in the pull-down menu *Use these additional criteria* select one of *Date Created, Date Modified, Author, Title, Subject, Keywords*.
- ▶ TET PDF IFilter: predefined document info entries are indexed if property set collection *shell* is enabled

**Custom document info entries.** Custom document info entries can be defined in addition to the standard entries.

- ▶ How to display with Acrobat 8/9: *File, Properties..., Custom* (not available in the free Adobe Reader)
- ▶ How to search with Acrobat 8/9: not available
- ▶ TET PDF IFilter: custom document info entries are indexed if custom properties are defined based on this document info entry

**XMP metadata on document level.** XMP metadata consists of an XML stream containing extended metadata.

- ▶ How to display with Acrobat 8/9: *File, Properties..., Additional Metadata..* (not available in the free Adobe Reader)
- ▶ How to search a single PDF with Acrobat 8/9: not available
- ▶ How to search multiple PDFs with Acrobat 8/9: click *Edit, Search* and *Use Advanced Search Options*. In the *Look In*: pull-down select a folder of PDF documents and in the pull-down menu *Use these additional criteria* select *XMP Metadata* (not available in the free Adobe Reader).
- ▶ TET PDF IFilter: document XMP metadata indexed if property set collection *documentXMP* is enabled or custom properties are defined based on document XMP

**XMP metadata on image level.** XMP metadata can be attached to document components, such as images, pages, fonts, etc. However, XMP is commonly only found on the image level (in addition to document level).

- ▶ How to display with Acrobat 8/9: *Tools, Advanced Editing, TouchUp Object Tool*, select image, right-click, *Show Metadata...* (not available in the free Adobe Reader)
- ▶ How to search with Acrobat 8/9: not available
- ▶ TET PDF IFilter: XMP image metadata is indexed if property set collection *imageXMP* is enabled

**Text in form fields.** Form fields are displayed on top of the page. However, technically they are not part of the page contents, but represented by separate data structures.

- ▶ How to display with Acrobat 8: *View, Navigation Panels, Fields*
- ▶ How to display with Acrobat 9: *Forms, Add or Edit Fields...*
- ▶ How to search with Acrobat 8/9: not available
- ▶ TET PDF IFilter: form fields are indexed if custom properties are defined based on pCOS pseudo object *fields*. If the main page contents (i.e. the form field captions) are not required because they are constant you can disable page content indexing with the page option *skipengines={text image}*. The following excerpt shows the relevant parts of the XML configuration file (see Chapter 4, »XML Configuration File«, page 63) for this situation:

```
<n:Tet>
  <n:TetOptions></n:TetOptions>
  <n:DocOptions></n:DocOptions>
  <n:PageOptions>>skipengines={text image}</n:PageOptions>
</n:Tet>

<n:Filtering metadataHandling="propertyAndText"/>

<n:Metadata>
  <n:PropertySet guid="E9CDA960-D09A-43bc-AAAA-BBBBBBBBBBBBBB">
    <n:Property friendlyName="Formfield" identifier="2">
      <n:Source pdfObject="fields[*]/V"/>
    </n:Property>
  </n:PropertySet>
</n:Metadata>
```

**Text in comments (annotations).** Similar to form fields, annotations (notes, comments, etc.) are layered on top of the page, but are represented by separate data structures. The interesting text contents of an annotation depend on its type. For example,

for Web links the interesting part may be the URL, while for other annotation types the visible text contents may be relevant.

- ▶ How to display with Acrobat 8/9: *View, Navigation Panels, Comments*
- ▶ How to search a single PDF with Acrobat 8/9: *Edit, Search* and check the box *Include Comments*, or use the *Search Comments* button on the Comments List toolbar
- ▶ How to search multiple PDFs with Acrobat 8/9: click *Edit, Search* and *Use Advanced Search Options*. In the *Look In*: pull-down select a folder of PDF documents and in the pull-down menu *Use these additional criteria* select *Comments*.
- ▶ TET PDF IFilter: comments are indexed if property set collection *pdf* is enabled

**Text in bookmarks.** Bookmarks are not directly page-related, although they may contain an action which jumps to a particular page. Bookmarks can be nested to form a hierarchical structure.

- ▶ How to display with Acrobat 8/9: *View, Navigation Panels, Bookmarks*
- ▶ How to search a single PDF with Acrobat 8/9: *Edit, Search* and check the box *Include Bookmarks*
- ▶ How to search multiple PDFs with Acrobat 8/9: click *Edit, Search* and *Use Advanced Search Options*. In the *Look In*: pull-down select a folder of PDF documents and in the pull-down menu *Use these additional criteria* select *Bookmarks* (not available in the free Adobe Reader)
- ▶ TET PDF IFilter: bookmarks are indexed if property set collection *pdf* is enabled

**File attachments.** PDF documents may contain file attachments (on document or page level) which may themselves be PDF documents.

- ▶ How to display with Acrobat 8/9: *View, Navigation Panels, Attachments*
- ▶ How to search with Acrobat 8/9: Use *Edit, Search* and check the box *Include Attachments* (not available in the free Adobe Reader). Nested attachments will not be searched recursively.
- ▶ TET PDF IFilter: PDF attachments are indexed recursively if *@indexNestedPdf=true*

**PDF packages and portfolios.** Acrobat 8 (PDF 1.7) introduced the concept of PDF packages which are file attachments with additional properties. Acrobat 9 (PDF 1.7 extension level 3) extends this concept with the introduction of PDF portfolios.

- ▶ How to display with Acrobat 8/9: Acrobat presents the cover sheet of the package/portfolio and the constituent PDF documents with dedicated user interface elements for PDF packages.
- ▶ How to search a single PDF package with Acrobat 8/9: *Edit, Search* and in the *Look In*: pull-down select *In the Entire PDF Package*
- ▶ How to search multiple PDF packages with Acrobat 8/9: not available
- ▶ TET PDF IFilter: PDF documents contained in packages/portfolios are indexed recursively if *@indexNestedPdf=true*

**PDF properties.** This domain does not explicitly contain text, but is used as a container which collects various intrinsic properties of a PDF document, e.g. PDF/X and PDF/A status, Tagged PDF status, etc.

- ▶ How to display with Acrobat 8: Acrobat 8 does not directly display standards conformance information, but you can find relevant entries in *File, Properties...*, *Custom or File, Properties...*, *Additional Metadata...* (not available in the free Adobe Reader). You can also use the free PDFlib custom XMP panel<sup>1</sup> for ISO standards to explicitly dis-

play conformance information for the PDF/A-1, PDF/X-4, PDF/X-5, and PDF/E-1 standards.

- ▶ Acrobat 9: *View, Navigation Panels, Standards* (only present for standard-conforming PDFs)
- ▶ How to search with Acrobat 8/9: not available
- ▶ TET PDF IFilter: PDF properties are indexed if property set collection *pdf* is enabled

1. See [www.pdflib.com/knowledge-base/xmp-metadata/xmp-panels/](http://www.pdflib.com/knowledge-base/xmp-metadata/xmp-panels/)

## 2.2 Automatic Language Detection

**Importance of proper language detection.** Several aspects of content indexing can significantly be improved by language-specific postprocessing of the indexed content. While the details vary among different IFilter clients, the following aspects are highly language-dependent:

- ▶ A component called wordbreaker is used to break the text content into words.
- ▶ Word stemmers extract the base form of an indexed word. This way search queries produce hits even if the search term is used in a slightly modified (inflected) form in the indexed document.
- ▶ Thesaurus-based search
- ▶ Noise word lists contain words which are considered irrelevant for searches, and are therefore not included in the index, e.g. *the, a, and, at, on*.

**Automatic language detection.** The features mentioned above can only be implemented if the natural language is known in which the text has been written. By default, IFilter clients will use the system locale for all language-specific processing. As a consequence, indexing Japanese documents on an English system will create mediocre index contents and therefore searches can fail to locate existing target documents. Assigning the proper natural language is especially important for documents with East-Asian language content.

In order to improve all aspects of language-specific processing during the indexing process, TET PDF IFilter automatically determines the natural language for text in the document contents and properties of type *string*. TET PDF IFilter deploys two techniques for determining the language:

- ▶ In some cases checking the script (writing system) is sufficient for determining the language. For example, Japanese Hiragana characters are exclusively used for writing text in the Japanese language.
- ▶ Many languages share the same writing system with other languages. For example, most Western languages are written in the Latin script. In these cases TET PDF IFilter applies statistical analysis to determine the appropriate language.

Since automatic language detection analyzes each text chunk separately, a document may contain arbitrary mixtures of languages. Each segment will be assigned the corresponding language as follows:

- ▶ Automatic script detection splits the text in chunks consisting of the same script.
- ▶ If the script does not uniquely identify the language, automatic language detection is used to analyze the text. This process assigns the most likely language for the whole chunk, but will not further split the chunk into smaller chunks for each language. For example, a chunk with Latin text in the English, German, and French languages will be assigned one of these languages for the whole chunk, depending on the actual distribution of the languages.

**Manual language assignment.** Automatic language detection in TET PDF IFilter can be customized for special applications. This configuration feature makes use of LCIDs (Locale Identifiers). LCIDs specify the natural language and can also distinguish between different national or regional language variants (e.g. UK English vs. US English). Table 2.1 lists some commonly used LCID values. A complete list of LCIDs can be found at

[msdn.microsoft.com/en-us/library/ms776294\(v5.85\).aspx](http://msdn.microsoft.com/en-us/library/ms776294(v5.85).aspx)

Note TET PDF IFilter does not apply any language-specific processing beyond language detection. It is up to the IFilter client to use the LCID information. While some IFilter clients (e.g. SharePoint, SQL Server) include sophisticated LCID treatment, other IFilter clients may completely ignore the LCID information.

Table 2.1 Common LCID values and the corresponding primary and secondary language

LCID	primary language	secondary language (country)
0x0000	Neutral locale language	Neutral sublanguage
0x0401	Arabic (ar)	Saudi Arabia (SA)
0x0404	Chinese (zh)	Traditional (Hant)
0x0407	German (de)	Germany (DE)
0x0409	English (en)	United States (US)
0x040c	French (fr)	France (FR)
0x0410	Italian (it)	Italy (IT)
0x0411	Japanese (ja)	Japan (JP)
0x0413	Dutch (nl)	Netherlands (NL)
0x0419	Russian (ru)	Russia (RU)
0x0804	Chinese (zh)	Simplified (Hans)
0x0c0a	Spanish (es)	Spain (ES)
0x0800	System default locale language	
0x1000	Unspecified custom locale language	Unspecified custom sublanguage

**XML configuration for LCIDs.** LCIDs for overriding or supplementing automatic LCID detection can be specified in the *LocaleId* element of the XML configuration file:

```
<LocaleId default="1031" detection="auto" latin="1031" cyrillic="1026" chinese="4100"/>
```

The *detection* attribute can have the values *auto*, *disabled*, and *script*. All other attributes except *default* will be ignored if *detection=disabled*. Default is *auto*. The *script* setting activates script analysis, but disables statistical analysis.

The *default* attribute can be used to specify a global LCID setting which will be used for all text if *detection=disabled*. If this attribute is missing, the system locale will be used.

For all attributes except *detection* a numeric value in decimal or hexadecimal syntax can be specified. Hexadecimal values must start with *0x*. Table 2.2 lists the supported script attributes and their default values. LCIDs for text in all other scripts will be assigned automatically.

Table 2.2 Attributes for specifying script-specific locale IDs (LCIDs)

<b>attribute</b>	<b>default value</b>
<i>default</i>	<i>0x0800 Current system locale (will be used for all text chunks if detection=disabled)</i>
<i>latin</i>	<i>0x0409 English (US)</i>
<i>cyrillic</i>	<i>0x0419 Russian (RU)</i>
<i>arabic</i>	<i>0x0401 Arabic (SA)</i>
<i>chinese</i>	<i>0x0804 Chinese (People's Republic of China)</i>

## 2.3 PDF Versions and Protected Documents

**PDF versions.** TET PDF IFilter accepts all PDF versions up to PDF 1.7 extension level 3, the file format of Acrobat 9. This includes various PDF-based ISO standards, e.g. PDF/A, PDF/E, and PDF/X. Note that ISO 32 000 is technically equivalent to PDF 1.7 and therefore also supported.

**Protected PDF documents.** TET PDF IFilter indexes text and metadata from all documents as long as it can open it. This includes the following kinds of PDF documents:

- ▶ Unencrypted documents;
- ▶ Documents which are encrypted with a master password, but do not require any user password. The status of Acrobat's security setting *Content Copying Allowed/Not Allowed* does not affect documents in this group.

At first glance the second category may look like a violation of the document author's intention for protecting the document. However, it is not, since TET PDF IFilter does not provide any means for actually copying the text; it merely helps the search engine with indexing the document and subsequently locating the document in a search. Once the document is identified in a search and opened in Acrobat, it is still subject to any restrictions regarding content copying which may have been specified for the document.

Encrypted PDF documents which can not be opened will be logged. This category includes the following cases:

- ▶ Encrypted documents which require a user password, i.e. those which cannot be opened in Acrobat without supplying the corresponding password.
- ▶ Documents which have been encrypted with a user-specific security certificate.

**Damaged PDF documents.** PDF documents may contain damaged data structures, either because of faulty PDF generation software or because of some accidental modification (e.g. caused by failed network transfer). TET PDF IFilter automatically detects damaged PDF documents and attempts to repair such documents in order to allow for successful extraction of text and metadata. This repair mode will be run automatically as part of the indexing process. In some cases this mode will not be sufficient, and TET PDF IFilter will therefore process the document with a more thorough repair mode. Since it is more time-consuming, this forced repair mode is only applied for severely damaged PDFs which cannot successfully be processed in automatic repair mode.

If a document can be opened successfully, but contains one or more damaged pages, these pages will be ignored and processing continues with subsequent pages. For each ignored page an entry will be written to the application event log.

## 2.4 Unicode Postprocessing

The TET kernel, which provides the underlying PDF text extraction engine for TET PDF IFilter, provides extensive controls for Unicode postprocessing. These are discussed in detail in the TET manual which is included in the TET PDF IFilter package. Below we mention the most important features.

The Unicode postprocessing features are controlled by TET document options. In TET PDF IFilter these options can be provided in the *DocOptions* element of the XML configuration file, e.g.

```
<Tet>
  <DocOptions>decompose={canonical=_all}</DocOptions>
  <PageOptions/>
  <TetOptions/>
</Tet>
```

### 2.4.1 Unicode Folding

Foldings process one or more Unicode characters and apply a certain action on each of the characters. The following actions are available:

- ▶ preserve the character;
- ▶ remove the character;
- ▶ replace it with a another (fixed) character.

Table 2.3 lists examples for the *fold* option which demonstrate various folding applications. The sample options must be supplied in the document option list. TET can apply foldings to a selected subset of all Unicode characters. These are called Unicode sets; their syntax is discussed in the TET manual

Table 2.3 Examples for the *fold* option

<i>description and option list</i>	<i>before folding</i>	<i>after folding</i>
<b>Remove all characters in a Unicode set</b>		
<i>Keep only characters in ISO 8859-1 (Latin-1) in the output, i.e. remove all characters outside the Basic Latin Block:</i> fold={{[^U+0020-U+00FF] remove}}	A U+0104	n/a
<i>Remove all non-alphabetic characters (e.g. punctuation, numbers):</i> fold={{[:Alphabetic=No:] remove}}	7 U+0037	n/a
	A U+0041	A U+0041
<i>Remove all characters except numbers:</i> fold={{^[[:General_Category=Decimal_Number:]] remove}}	7 U+0037	7 U+0037
	A U+0041	n/a
<i>Remove all unknown characters, i.e. PUA characters and characters for which no usable Unicode value could be determined (the remaining default foldings are re-enabled):</i> fold={{[:Private_Use:] remove} {[U+FFFD] remove} default}	U+FFFF	n/a
<i>Remove all dashed punctuation characters:</i> fold={{[:General_Category=Dash_Punctuation:] remove}}	- U+002D	n/a
<i>Remove all Bidi control characters:</i> fold={{[:Bidi_Control:] remove}}	U+200E	n/a

Table 2.3 Examples for the fold option

description and option list	before folding	after folding
<b>Replace all characters in a Unicode set with a specific character</b>		
<i>Space folding: map all variants of Unicode space characters to U+0020:</i>		
fold={{[:blank:] U+0020}}	U+00A0	U+0020
<i>Dashes folding: map all variants of Unicode dash characters to U+002D:</i>		
fold={{[:Dash:] U+002D}}	- U+2011	- U+002D
<i>Replace all unassigned characters (i.e. Unicode code points to which no character is assigned) with U+FFFD: fold={{[:Unassigned:] U+FFFD}}</i>		
	U+03A2	🔍 U+FFFD
<b>Special handling for individual characters</b>		
<i>Preserve all hyphen characters at line breaks while keeping the remaining default foldings. Since these characters are identified internally in TET (as opposed to having a fixed Unicode property) the keyword <code>_dehyphenation</code> is used to identify the folding's domain: fold={{_dehyphenation preserve}}</i>		
	- U+002D	- U+002D
<i>Preserve Arabic Tatweel characters (which are removed by default):</i>		
fold={{[U+0640] preserve}}	- U+0640	- U+0640
<i>Replace various punctuation characters with their ASCII counterparts:</i>		
fold={{[[U+2018] U+0027] [[U+2019] U+0027] [[U+201C] U+0022] [[U+201D] U+0022]}}	" U+201C	" U+0022

## 2.4.2 Unicode Decomposition

**Canonical decomposition.** Characters or character sequences which are canonically equivalent represent the same abstract character and should therefore always have the same appearance and behavior. Common examples include precomposed characters (e.g.  $\text{Ä}$  U+00C4) vs. combining sequences (e.g.  $\text{A}$   $\text{¨}$  U+0041 U+0308): both representations are canonically equivalent. Switching from one representation to the other does not remove information. Canonical decompositions replace one representation with another which is considered the canonical representation.

In the Unicode code charts<sup>1</sup> (but not the character tables) canonical mappings are marked with the symbol IDENTICAL TO  $\equiv$  U+2261. The decomposition name *<canonical>* is implicitly assumed. Table 2.4 contains several examples.

The following document option maps all canonical equivalents to their equivalent counterparts:

```
decompose={canonical=_all}
```

Table 2.4 Canonical decomposition: suboption for the decompose option (canonically equivalent characters are marked with the symbol IDENTICAL TO  $\equiv$  U+2261 in the Unicode code charts)

decomposition name	description	before decomposition	after decomposition
<i>canonical</i> <sup>1</sup>	Canonical decomposition	$\text{Ä}$ U+00C0	$\text{A}$ $\text{¨}$ U+0041 U+0300
		$\text{林}$ U+F9F4	$\text{林}$ U+6797
		$\text{Ω}$ U+2126	$\text{Ω}$ U+03A9
		$\text{ば}$ U+3070	$\text{は}$ $\text{¨}$ U+306F U+3099
		$\text{ℵ}$ U+FB2F	$\text{ℵ}$ U+05D0 U+05B8

<sup>1</sup>. By default this decomposition is not applied to all characters in order to preserve certain characters; see the TET manual for details.

**Compatibility decomposition.** Characters which are compatibility equivalent represent the same abstract character, but may differ in appearance or behavior. Examples include isolated forms of Arabic characters (e.g.  $\text{س}$  U+0633) vs. context-specific shaped forms

(e.g.  $\text{س}$  U+FEB2,  $\text{س}$  U+FEB4,  $\text{س}$  U+FEB3). Compatibility equivalent characters differ in formatting. Removing this formatting information implies loss of information, but may simplify processing for certain types of applications (e.g. searching). Compatibility decompositions remove the formatting information.

<sup>1</sup>. See [www.unicode.org/Public/5.2.0/charts/](http://www.unicode.org/Public/5.2.0/charts/)

Table 2.5 Compatibility decomposition: suboptions for the decompose option (canonically equivalent characters are marked with the symbol ALMOST EQUAL TO  $\approx$  in the Unicode code charts)  
U+2248

decomposition name	description	before decomposition	after decomposition (in logical order)
<b>circle</b>	Encircled characters	Ⓣ U+3251	2 1 U+0032 U+0031
<b>compat<sup>1</sup></b>	Other compatibility decompositions, e.g. common ligatures	fi U+FB01	f i U+0066 U+0069
<b>final</b>	Final presentation forms, especially Arabic	س U+FEB2	س U+0633
<b>font</b>	Font variants, e.g. mathematical set letters, Hebrew ligatures	Ⓒ U+2102	Ⓒ U+0043
<b>fraction<sup>1</sup></b>	Vulgar fraction forms	¼ U+00BC	1 / 4 U+0031 U+2044 U+0034
<b>initial</b>	Initial presentation forms, especially Arabic	س U+FEB3	س U+0633
<b>isolated</b>	Isolated presentation forms, especially Arabic	س U+FD0E	س ر U+0633 U+0631
<b>medial</b>	Medial presentation forms, especially Arabic	س U+FEB4	س U+0633
<b>narrow</b>	Narrow (hankaku) compatibility characters	ㇿ U+FF66	ㇿ U+30F2
<b>nobreak</b>	Non-breaking characters	U+00A0	U+0020
<b>none</b>	Disable all decompositions which are not explicitly specified in the decompose option list. (leaves all characters unmodified)		
<b>small</b>	Small forms for CNS 11643 compatibility	U+FE50	U+002C
<b>square</b>	CJK squared font variants	ㇿ U+3314	ㇿ ◻ U+30AD U+30ED
<b>sub<sup>1</sup></b>	Subscript forms	₁ U+2081	₁ U+0031
<b>super<sup>1</sup></b>	Superscript forms	ᵃ U+00AA ™ U+2122	ᵃ U+0061 ™ ™ U+0054 U+004D
<b>vertical</b>	Vertical layout presentation forms	⸮ U+FE37	{ U+007B
<b>wide</b>	Wide (zenkaku) compatibility forms	£ U+FFE1	£ U+00A3

1. By default this decomposition is not applied to all characters in order to preserve certain characters; see the TET manual for details.

In the Unicode code charts compatibility mappings are marked with the symbol ALMOST EQUAL TO  $\approx$ , followed by the decomposition name (or »tag«) in angle brackets, e.g. `<noBreak>`. If no tag name is provided, `<compat>` is assumed. The tag names are identical to the option names in Table 2.5. As can be seen in some of the examples, the result of a decomposition may convert a single character to a sequence of multiple characters.

The following document option preserves wide (double-byte or zenkaku) and hankaku (narrow) characters:

```
decompose={wide=_none narrow=_none}
```

## 2.4.3 Unicode Normalization

The Unicode standard defines four normalization forms which are based on the notions of canonical equivalence and compatibility equivalence. All normalization forms put combining marks in a specific order and apply decomposition and composition in different ways:

- ▶ Normalization Form C (NFC) applies canonical decomposition followed by canonical composition.
- ▶ Normalization Form D (NFD) applies canonical decomposition.
- ▶ Normalization Form KC (NFKC) applies compatibility decomposition followed by canonical composition.
- ▶ Normalization Form KD (NFKD) applies compatibility decomposition.

The normalization forms are specified in Unicode Standard Annex #15 »Unicode Normalization Forms« (see [www.unicode.org/versions/Unicode5.2.0/cho3.pdf#G21796](http://www.unicode.org/versions/Unicode5.2.0/cho3.pdf#G21796) and [www.unicode.org/reports/tr15/](http://www.unicode.org/reports/tr15/)).

TET PDF IFilter supports all four Unicode normalization forms. Unicode normalization can be controlled via the *normalize* document option, e.g.

```
normalize=nfc
```

TET PDF IFilter does not apply normalization by default. Because of the possible interaction between the *decompose* and *normalize* options, setting the *normalize* option to a value different from *none* disables the default decompositions.

The choice of normalization form depends on the application's requirements. For example, some databases expect text in NFC which also the preferred format for Unicode text on the Web. Table 2.6 demonstrates the effect of Normalization on various characters.

Table 2.6 Unicode normalization forms: examples

<i>before normalization</i>	<i>NFC</i>	<i>NFD</i>	<i>NFKC</i>	<i>NFKD</i>
Ä U+00C4	Ä U+00C4	À ¨ U+0041 U+0308	Ä U+00C4	À ¨ U+0041 U+0308
À ¨ U+0041 U+0308	Ä U+00C4	À ¨ U+0041 U+0308	Ä U+00C4	À ¨ U+0041 U+0308
¨ À U+0308 U+0041	¨ À U+0308 U+0041	¨ À U+0308 U+0041	¨ À U+0308 U+0041	¨ À U+0308 U+0041
fi U+FB01	fi U+FB01	fi U+FB01	f i U+0066 U+0069	f i U+0066 U+0069
3 5 U+0033 U+2075	3 5 U+0033 U+2075	3 5 U+0033 U+2075	3 5 U+0033 U+0035	3 5 U+0033 U+0035
Å U+212B	Å U+00C5	À ° U+0041 U+030A	Å U+00C5	À ° U+0041 U+030A
TM U+2122	TM U+2122	TM U+2122	T M U+0054 U+004D	T M U+0054 U+004D

Table 2.6 Unicode normalization forms: examples

<i>before normalization</i>	<i>NFC</i>	<i>NFD</i>	<i>NFKC</i>	<i>NFKD</i>
Ⅳ U+2163	Ⅳ U+2163	Ⅳ U+2163	Ⅰ Ⅴ U+0049 U+0056	Ⅰ Ⅴ U+0049 U+0056
ㄱ U+FB48	ㄱ U+05E8 U+05BC	ㄱ U+05E8 U+05BC	ㄱ U+05E8 U+05BC	ㄱ U+05E8 U+05BC
가 U+AC00	가 U+AC00	ㄱ ㅏ U+1100 U+1161	가 U+AC00	ㄱ ㅏ U+1100 U+1161
ぢ U+3062	ぢ U+3062	ぢ 々 U+3061 U+3099	ぢ U+3062	ぢ 々 U+3061 U+3099
10月 U+32C9	10月 U+32C9	10月 U+32C9	1 0 月 U+0031 U+0030 U+6708	1 0 月 U+0031 U+0030 U+6708

## 2.5 Custom Glyph Mapping Tables

Although many workarounds are implemented in TET PDF IFilter, in certain rare cases it may be unable to correctly extract text from PDF documents if crucial information for Unicode mapping is missing from the document. If you have many documents with similar properties (e.g. created with the same software and set of fonts) you can provide auxiliary Unicode mapping tables which can be used to extract text from PDF documents which otherwise could not be indexed.

TET PDF IFilter supports various table formats which are detailed in the documentation of the PDFlib TET product. You can also use the free PDFlib FontReporter and PDFlib TET Plugins for Adobe Acrobat to try such mapping tables. Unicode mapping tables must be configured with appropriate document options in the configuration file, and can be placed in the *resource* directory of the TET PDF IFilter installation directory.

**XML configuration for TET options.** Option lists for controlling operation of the TET core (e.g. for using custom glyph mapping tables) must be constructed according to the option list syntax described in the TET product documentation, and can be supplied to TET PDF IFilter in the *DocOptions*, *PageOptions*, and *TetOptions* elements of the XML configuration file, which are all children of the *Tet* element:

```
<Tet>
  <DocOptions>glyphmapping {{fontname=T* glyphlist={tex}}}</DocOptions>
  <PageOptions/>
  <TetOptions>searchpath={C:/glyphlists}</TetOptions>
</Tet>
```



# 3 Metadata Properties

## 3.1 Sources of Metadata in PDF

Most PDF documents contain document information entries, such as the *Author* and *Title* fields. In addition to document information entries PDF documents may contain XMP metadata. TET PDF IFilter supports indexing of several kinds of metadata in PDF documents.

**Predefined and custom document info entries.** Document information entries are considered the old and simple kind of PDF metadata. They can be displayed in Acrobat via *File, Properties...*. The following document info entries are predefined in PDF:

Title Author Subject Keywords Creator Producer CreationDate ModDate Trapped

In addition to predefined document info entries custom entries can be added to the set of document info entries. They can be displayed and edited in Acrobat (but not Adobe Reader) via *File, Properties..., Custom*.

Both predefined and custom document info entries can be addressed with pCOS paths in TET PDF IFilter (see below).

**XMP properties at the document and image level.** XMP (*Extensible Metadata Platform*<sup>1</sup>) is a framework for specifying metadata. XMP is required, for example, for PDF/A conformance, and is supported by an increasing number of applications. XMP metadata is organized in schemas which contain a number of properties. Properties are addressed using a namespace prefix and the property name.

XMP metadata is usually associated with the whole document. However, in PDF it is also possible to associate XMP with individual pages, images, or other objects. In practise this feature is mainly used for raster images. For example, a digital image may carry the name of the photographer, copyright notes, scene details and other information. An important source of image-related XMP metadata is Adobe Photoshop. If you create PDF from Photoshop or use Photoshop-created images in Adobe workflows, the XMP metadata will usually be included in the PDF document, and can be indexed with TET PDF IFilter.

The XMP specification includes a description of all predefined XMP schemas and properties. More information on XMP can be found at

[www.adobe.com/devnet/xmp](http://www.adobe.com/devnet/xmp)

XMP properties on the document or image level (as well as XMP associated with other objects) can be addressed in two steps: a pCOS path identifies the relevant PDF object, and a two-part XMP property name addresses the target XMP schema and property.

XMP metadata can be displayed and edited in Acrobat and other products of the Adobe Creative Suite with Custom XMP panels. These are descriptions of a custom user interface for specific XMP metadata. Sample XMP panels are installed with TET PDF IFilter; more information and installation instructions can be found at

[www.pdflib.com/knowledge-base/xmp-metadata/xmp-panels/](http://www.pdflib.com/knowledge-base/xmp-metadata/xmp-panels/)

1. See [www.adobe.com/products/xmp](http://www.adobe.com/products/xmp)

**Extended pCOS paths.** The pCOS (*PDFlib Comprehensive Object Syntax*) interface provides a simple and elegant facility for retrieving arbitrary information from all sections of a PDF document which do not describe page contents, such as page dimensions, metadata, interactive elements, etc. Examples for using the pCOS interface and a description of the pCOS path syntax are contained in the pCOS Path Reference which is available as a separate document. Additional examples can be found in the pCOS Cookbook at [www.pdflib.com/pcos-cookbook/](http://www.pdflib.com/pcos-cookbook/).

pCOS can be used in TET PDF IFilter to address information about a document. pCOS paths represent some aspect of the PDF document such as bookmarks, font name, or page size, and can also address document info entries or XMP metadata streams (but not properties within an XMP stream). While the pCOS API functions are not available in TET PDF IFilter, you can supply pCOS paths as expressions in the XML configuration file in order to index information about a document

Table 3.1 lists the pCOS paths for some commonly used PDF objects. Many pCOS objects are represented by arrays which require an array index in angle brackets, e.g. *pages[0]* denotes the first page (pages are counted starting at 0). In addition to all pCOS paths supported by the TET product (which forms the basis of TET PDF IFilter), the IFilter supports the following syntax extension for pCOS paths: You can use a »\*« (asterisk) wildcard character instead of an array or dictionary index. This means that TET PDF IFilter will iterate over all possible values of the array index, and include all corresponding object values in the indexing process. An arbitrary number of wildcards may be used within a single pCOS path.

Table 3.1 pCOS paths for various PDF objects

pCOS path	type	explanation
<i>length:pages</i>	number	number of pages in the document
<i>/Info/Title</i>	string	standard document info field Title
<i>/Info/ArticleNumber</i>	string	custom document info field ArticleNumber (document info entries can use arbitrary names)
<i>/Root/Metadata</i>	stream	XMP stream with the document's metadata
<i>images[*]/Metadata</i>	stream	XMP metadata streams for all images in the document
<i>fonts[*]/name</i>	string	name of a font; the number of entries can be retrieved with <i>length:fonts</i>
<i>length:fonts</i>	string	the number of fonts in a document
<i>length:images</i>	string	the number of images in a document
<i>fonts[*]/embedded</i>	boolean	embedding status of a font
<i>pages[*]/width</i>	number	width of the visible area of the page
<i>pages[*]/annots[*]/A/URI</i>	string	target URL of the Web links on all pages
<i>pages[*]/Resources/Properties[*]/Metadata</i>	stream	XMP metadata for placed artwork on all pages in the document
<i>fields[*]/V</i>	string	text contents (value) of all form fields on all pages in the document

**XML configuration for metadata sources.** Sources of metadata properties can be configured in the *Source* element (child of the *Property* element) of the XML configuration file. While the *pdfObject* attribute contains an extended pCOS path for a PDF object, the *xmpName* attribute contains the schema prefix and name of an XMP property:

```
<Source pdfObject="/Info/ArticleNumber"/>  
<Source xmpName="acme:number"/>
```

## 3.2 Metadata Organization

Metadata is organized in the following hierarchical way:

- ▶ *Properties* are the fundamental building blocks for metadata. Properties in the Windows operating system and the IFilter interface are organized by a unique numeric identifier (see below).
- ▶ *Property sets* comprise a group of properties which usually have some logical relationship. All properties in a set share the same GUID (see below). Property sets can be specified in the XML configuration file.
- ▶ *Property set collections* comprise a group of property sets. TET PDF IFilter implements several predefined property set collections. They can be used to collectively enable or disable multiple property sets together. It is not required to configure additional property set collections.

**Property identification and GUIDs.** Properties are identified in the IFilter interface by an identifier which consists of two parts:

- ▶ The first part is the *Globally Unique Identifier* GUID (sometimes also called *Universally Unique Identifier*, UUID), a unique 128-bit identifier which has the same value for all properties in a property set. Details on GUIDs can be found at

[www.itu.int/ITU-T/studygroups/com17/oid/X.667-E.pdf](http://www.itu.int/ITU-T/studygroups/com17/oid/X.667-E.pdf)

There are various tools available for creating GUIDs; you can also use online services, e.g. the one which is available at

[www.itu.int/ITU-T/asn1/uuid.html](http://www.itu.int/ITU-T/asn1/uuid.html)

A sample GUID looks as follows: *7a737220-0cdo-11dd-bd75-0002a5d5c51b*.

- ▶ The second part uniquely identifies the property within its property set. It can consist of a positive integer called the *identifier*, or *ID* for short. Property identifiers in a set must start with the value 2, but are otherwise arbitrary. Property identifiers are supported in all IFilter clients.

Alternatively, the second part may consist of a cleartext name. The use of names instead of IDs is deprecated, and is not supported by some IFilter clients, e.g. Windows Search. However, it can make configuration more convenient for those IFilter clients which support it, e.g. SharePoint. See »XML configuration for GUID+name treatment of properties«, page 43, for information on enabling the GUID+name method.

The GUID+ID or GUID+name combination is required to configure metadata property queries in search products. Other aspects of metadata properties are detailed in Section 3.4, »Custom Metadata Properties«, page 42.

## 3.3 Predefined Metadata Properties

The following property set collections are built into TET PDF IFilter:

- ▶ *Shell properties* are known to Windows and have user-friendly names. TET PDF IFilter populates all Shell properties which have equivalents in PDF documents. Common examples are *System.Author* and *System.Title*, and *System.Document.DateCreated*. For a list and description of shell properties see [msdn.microsoft.com/en-us/library/bb763010\(VS.85\).aspx](http://msdn.microsoft.com/en-us/library/bb763010(VS.85).aspx)
- ▶ *PDF properties* are specific to PDF documents. They are populated from pCOS paths. Examples are the PDF version number, bookmark contents, or page size.
- ▶ *Document XMP properties* cover all predefined document properties in the XMP 2005 specification, see [www.adobe.com/devnet/xmp](http://www.adobe.com/devnet/xmp)
- ▶ *Image XMP properties* cover XMP properties which are attached to images in the document. Image properties are also derived from the XMP 2005 specification.
- ▶ *Internal properties* are auxiliary properties which are not intended for production use, but as development and debugging aids. They include software version numbers and the time of indexing.

A full list of predefined properties along with their GUIDs and user-friendly names can be found in Appendix A, »Predefined Metadata Properties«.

Properties from these collections do not have to be configured individually. However, they must be enabled as required since not all collections are enabled by default (see below). You can override predefined properties by assigning the corresponding GUID+ID combination to a custom property.

**XML configuration for enabling property set collections.** Some or all of the predefined property set collections can be enabled with the corresponding attributes in the *Metadata/PropertySetCollection* element:

```
<PropertySetCollection
  shell="true"
  pdf="true"
  documentXmp="true"
  imageXmp="true"
  internal="true"/>
```

By default, the *Shell* and *Internal* property set collections are enabled, while the *documentXMP*, *imageXMP*, and *PDF* property set collections are disabled. Custom properties are enabled implicitly if one or more custom properties are specified.

Handling of all predefined and custom metadata properties can be completely disabled with the *metadataHandling* attribute of the *Filtering* element:

```
<Filtering indexNestedPdf="true" metadataHandling="ignore">
```

## 3.4 Custom Metadata Properties

Custom metadata properties are additional properties beyond the predefined properties which meet specific requirements within an enterprise, organization, industry etc. TET PDF IFilter gives you full control over custom properties: they can be specified in the configuration file so that they will be generated by TET PDF IFilter and indexed by the search engine.

**Planning custom metadata properties.** In order to specify custom properties you must consider the following aspects (see »Property identification and GUIDs«, page 40, for details on GUIDs, identifiers, and friendly names):

- ▶ You can group one or more properties in a property set. Each property set needs a unique 128-bit identifier called the GUID.
- ▶ The property *identifier* is a unique integer which identifies the property within its property set. Property identifiers in a set start at the value 2. With some IFilter clients the identifier can be replaced with a friendly name. You can override predefined properties by assigning the corresponding GUID+ID combination.
- ▶ The *friendly name* for a property is optional if an identifier is available, and required otherwise. It can be an arbitrary name which must be unique within the configuration file. While for some IFilter clients it can be used instead of the identifier, friendly names do not work with all IFilter clients.
- ▶ Property *source*: properties can be populated from document metadata or general PDF information according to Section 3.1, »Sources of Metadata in PDF«, page 37.
- ▶ The *data type* of the property: *Int32* (32-bit integer), *Double* (floating point number with double precision), *Boolean* (true/false), *DateTime* (specification of a point in time), and *String*.
- ▶ The *precedence* rule: if there is more than one data source for the property you can specify whether the first available non-empty data source will have precedence (i.e. subsequent sources will be ignored), or whether data from all non-empty sources will be collected.
- ▶ Specify whether the property will be emitted as a *vector*, i.e. multiple values will be handed to the IFilter interface in an array structure instead of a flat value (see Section 3.5, »Multivalued Properties«, page 44).
- ▶ A *prefix* which will be prepended to the property name if properties are indexed as part of the full text (see Section 3.6, »Indexing Metadata Properties as Text«, page 45).

**XML configuration for custom properties.** One or more custom properties can be specified in the *PropertySet* element, where each *Property* element describes a property in the set:

```
<PropertySet guid="33333333-5354-4c72-992C-5DF2AA4E7CBA">
  <Property friendlyName="MailTo" identifier="2" type="String">
    <Source xmpName="acme:mailto"/>
  </Property>
</PropertySet>
```

Multiple PDF sources can be mapped to the same Windows property. The presence of a *Property* element will automatically enable processing for the specified property. However, handling of all predefined and custom metadata properties can be completely disabled with the *metadataHandling* attribute of the *Filtering* element:

```
<Filtering metadataHandling="ignore">
```

**XML configuration for GUID+name treatment of properties.** TET PDF IFilter will use GUID+ID to identify properties in the IFilter interface if the *identifier* is available. Custom properties which do not have the *identifier* attribute but only the *friendlyName* attribute, will be identified by GUID+name instead. In order to enable GUID+name treatment for predefined properties as well (and to globally force GUID+name treatment) you can use the *useIdentifier* attribute of the *Filtering* element:

```
<Filtering useIdentifier="false">
```

The names used for the predefined properties will be similar to the property prefixes shown in Table 3.2, except that the leading *TET\_* and the trailing underscore '\_' will be dropped (e.g. *System\_Author*, *pdfversion*, *dc\_contributor*, *photoshop\_DateCreated*).

Using GUID+name treatment for properties can be more convenient than GUID+ID in some environments, especially SharePoint.

## 3.5 Multivalued Properties

Metadata properties can contain one or more values. *Single-valued properties* consist of a flat value which describes the document as a whole. Examples for single-valued properties are the creation date (property sources: *xmp:CreateDate* and */Info/CreationDate*) and the unique document identifier (*dc:identifier*).

*Multivalued properties* may occur more than once per document. Examples for multivalued properties are the list of document authors and document keywords. The multiplicity of a property may have several reasons:

- ▶ The source of the property is an XMP container type and can therefore hold multiple entries at once, e.g. *dc:creator* has type *Seq* in XMP.
- ▶ The property is populated from a multivalued pCOS path with wildcards, where the wildcards will be expanded to any number of individual entries, e.g. *bookmarks[\*]/Title*.
- ▶ The property is populated from more than one source, and the *precedence* attribute of the property has the value *try-all*, e.g. *pdf:Keywords* and */Info/Keywords*. However, the default *precedence=first-wins* processes only the first non-empty property source.

**Vector treatment of properties.** By default, TET PDF IFilter will process all relevant sources in the property definition (subject to the *precedence* attribute), and emit as many non-empty property values as are available. In other words, each value will be returned as a single entity to the IFilter client. Property values will be returned in unspecified order.

Alternatively, multivalued properties can be provided as vectors to the IFilter client. This means that a single array entity will be emitted which can hold one or more values. There are several relevant aspects of vector processing for properties:

- ▶ SharePoint supports multivalued properties only if they are processed as vector entities.
- ▶ Some IFilter clients, e.g. Windows Search, support vector queries where you can search for one or more values in a multivalued vector property in a single query.
- ▶ Indexing Service supports vectors only for properties with type *String*.

Keep in mind that there are two separate concepts: *multivalued* refers to an aspect of the property's source, while *vector processing* refers to the way in which property values are transferred to the IFilter client. Vector processing can be applied to multivalued properties even if they contain only a single value.

Some of the predefined properties are multi-valued (see Appendix A, »Predefined Metadata Properties«).

**XML configuration for vector properties.** Vector processing for custom properties can be enabled with the *emitAsVector* attribute of the *Property* element:

```
<Property friendlyName="MailTo" type="String" precedence="try-all" emitAsVector="true">
  <Source xmpName="acme:mailto"/>
  <Source xmpName="gov:mailto"/>
</Property>
```

## 3.6 Indexing Metadata Properties as Text

Most text retrieval engines support property queries in some way. However, querying for properties may not be possible with retrieval products which support only full-text search, e.g. SQL Server. In another scenario, explicitly searching for properties may not be desired if you want to search for any occurrence of the search term, regardless of whether it occurs in the document content or some property. In both situations you can instruct TET PDF IFilter to include all properties in the full-text index. In order to distinguish the property from actual document content, TET PDF IFilter can optionally prefix the property values with a string which makes it easier to identify properties as such in situations where the search engine does not directly support property searches. Fixed prefixes will be used for the predefined properties listed in Appendix A, »Predefined Metadata Properties«.

While indexing properties as text allows limited property searches in environments which otherwise do not support property searches at all, you should be aware of the fact that the property searches are limited. For example, Boolean or other expressions are not available for property values.

**XML configuration for indexing metadata as text.** To index metadata properties as text set the *metadataHandling* attribute of the *Filtering* element to *propertyAndText* (to transparently blend the properties into the main text) or *propertyAndPrefixedText* (to identify the properties with a prefix):

```
<Filtering metadataHandling="PropertyAndPrefixedText">
```

The optional prefix which will be prepended to custom properties when filtering the document can be specified for custom properties in the *textIndexPrefix* attribute of the *Property* element:

```
<Property friendlyName="Title" identifier="7" textIndexPrefix="TITLE_">  
...  
</Property>
```

The prefixes which will be prepended to predefined properties are constructed according to the following scheme:

```
TET_<property name>_
```

where period characters '.' in the property name are replaced with underscore characters '\_' (see Table 3.2 for examples).

Table 3.2 Prefixes for indexing metadata properties as text

Property set collection	sample property name	prefix for indexing metadata as text
Shell	System.Author	TET_System_Author_
TET	PDFlib.TETPDFIFilter.pdfversion	TET_pdfversion_
XMP	dc:contributor	TET_dc_contributor_
Image	photoshop:DateCreated	TET_photoshop_DateCreated_

**Scenario 1: Transparently blend metadata properties into the main text.** If metadata properties contains sufficiently distinctive text which identifies the target document(s), it will suffice to include the properties in the full-text index and include it in standard full-text queries. For example, if you query for a specific article number, it doesn't matter whether the number occurs in the main text of the document or in a metadata property, as long as only one particular document talks about the article number in question. In other words, if it doesn't matter whether the text occurs in the main text or some metadata property, you must simply enable the indexing of properties as full-text, without any additional steps.

Use the following XML configuration to transparently blend metadata into the main text:

```
<Filtering metadataHandling="propertyAndText">
```

**Scenario 2: Distinguish metadata from the main text.** In other situations it may be relevant whether the text occurs in the main document or in some metadata property. For example, it makes a big difference whether you search for documents authored by *Doyle*, or documents which include the term *Doyle* in the main text. In this scenario you must not only enable the indexing of properties as full-text, but also include suitable prefixes for each property which make it possible to distinguish between text in the main document contents and text in metadata properties.

The value of the predefined property *System.Author* will be prepended by the prefix *TET\_System\_Author\_*. For example, you can emulate a property-based search for *System.Author=Doyle* with a full-text search for *TET\_System\_Author\_Doyle*. Since *System.Author* is a predefined property, the corresponding XML configuration does not require any property-specific entries, but must simply enable indexing of properties as prefixed text:

```
<Filtering metadataHandling="propertyAndPrefixedText">
```

In order to emulate a property-based search for documents with the article number *XY123456* with a full-text search for *ArticleNumber\_XY123456* use the following XML configuration:

```
<Filtering metadataHandling="propertyAndPrefixedText">
```

```
<PropertySet guid="404e8a40-2e85-11dd-97f6-0002a5d5c51b">
  <Property identifier="2" textIndexPrefix="ArticleNumber_">
    <Source pdfObject="/Info/ArticleNumber"/>
  </Property>
</PropertySet>
```

## 3.7 Metadata in Windows Search

**Create a property description file.** Windows Search accesses the Windows property system which holds descriptions of predefined and custom metadata properties. In order to use custom metadata properties with Windows Search you must prepare a property description file (often called *.propdesc*) which specifies the names, data types, and GUIDs of properties, as well as other property attributes. The property descriptions must match the corresponding property descriptions in the XML configuration file. Property descriptions must be specified as XML files according to the syntax described at the following location:

[msdn.microsoft.com/en-us/library/bb773879\(VS.85\).aspx](http://msdn.microsoft.com/en-us/library/bb773879(VS.85).aspx)

Sample property description files are installed with TET PDF IFilter. The following (incomplete) example demonstrates a few property descriptions:

```
<propertyDescription name="PDFlib.TETPDFIFilter.fontcount"
  formatID="{5eac0060-1ba4-11dd-92c4-0002a5d5c51b}" propID="2">
  <typeInfo type="Int32" isInnate="true" isViewable="true" isQueryable="true"/>
  <labelInfo label="fontcount" sortDescription="LowestHighest"/>
  <searchInfo inInvertedIndex="true" isColumn="true" columnIndexType="OnDisk"/>
</propertyDescription>
<propertyDescription name="PDFlib.TETPDFIFilter.weblink"
  formatID="{5eac0060-1ba4-11dd-92c4-0002a5d5c51b}" propID="6">
  <typeInfo type="String" isInnate="true" multipleValues="true" isViewable="true"
    isQueryable="true"/>
  <labelInfo label="weblink" sortDescription="AToZ"/>
  <searchInfo inInvertedIndex="true" isColumn="true" columnIndexType="OnDisk"/>
</propertyDescription>
```

Note that the *multipleValues="true"* attribute is crucial for multivalued properties (see Section 3.5, »Multivalued Properties«, page 44).

**Predefined properties.** A property description file *predefined\_properties.propdesc* for all predefined properties (see Appendix A, »Predefined Metadata Properties«) is installed with TET PDF IFilter. Although the property definitions are built into TET PDF IFilter, you must enable the desired property set collections in the XML configuration file (see Section 3.3, »Predefined Metadata Properties«, page 41), and register the property descriptions (see »Register metadata properties in Windows«, page 47) before you can use them in queries.

**XML configuration for Windows Search.** Table 3.3 lists requirements and recommendations related to the XML configuration for TET PDF IFilter when working with Windows Search.

**Register metadata properties in Windows.** In order to use property queries in Windows Search the corresponding property descriptions must be registered in the Windows property system. You can register property descriptions with the command-line program *registerpropdesc.exe* which is installed with TET PDF IFilter. Note that this tool works only if Windows Search is installed on the system. Supply the file name of a property description file to this tool to register it with the Windows property system (make sure to enclose the path with double quotes if it contains space characters):

Table 3.3 XML configuration for Windows Search

element	attribute	requirements and recommendation
<b>Filtering</b>	<b>uselidentifier</b>	Must be true since Windows Search supports only the GUID+ID method for identifying properties, but not GUID+name (see »XML configuration for GUID+name treatment of properties«, page 43).
<b>Property</b>	<b>identifier</b>	Required since Windows Search supports only the GUID+ID method for identifying properties, but not GUID+name (see »XML configuration for GUID+name treatment of properties«, page 43).
<b>PropertySetCollection</b>	<b>shell</b>	Should be true to support the shell properties known to Windows Search (note that true is the default anyway).

```
registerpropdesc "predefined_properties.propdesc"
```

*Note* Please read the section »Running privileged commands on Windows Vista/7«, page 6, if you are working on Windows Vista or Windows 7.

The Windows property system stores the names of property description files in the following registry keys (and increasing numbers in the last component of the key):

```
HKLM\SOFTWARE\Microsoft\Windows\CurrentVersion\PropertySystem\PropertySchema\0000
```

The *registerpropdesc* tool will emit an error message and a *HRESULT* error value if the property file could not successfully be registered (e.g. if a duplicate property was detected). In case of an error you can check the application event log for more details:

- ▶ Start, Settings, Control Panel, Administrative Tools, Event Viewer
- ▶ Click on *Application* in the left pane.
- ▶ In case of a problem with property registration there will be an entry with source *Microsoft-Windows-propsys*. Double-click on the line containing the entry and examine the error message (e.g. *Omitted duplicate property*).

Alternatively, you can use the *HRESULT* value emitted by *registerpropdesc.exe* to analyze the problem. A list of *HRESULT* values and explanations can be found at

[msdn.microsoft.com/en-us/library/cc231198.aspx](http://msdn.microsoft.com/en-us/library/cc231198.aspx)

A shared source command-line tool called *prop.exe* offers functionality similar to *registerpropdesc*, plus additional features for dealing with the Windows Property System: [prop.codeplex.com](http://prop.codeplex.com)

**Requirements for registering property descriptions.** Note the following important requirements when registering property description files for Windows Search:

- ▶ In order for custom properties to become available for searching, you must register the property description, stop and restart the search service, and force a rebuild via the Windows Search options:

```
registerpropdesc "predefined_properties.propdesc"
net stop wsearch
net start wsearch
...rebuild the catalog (see »Starting/Stopping Windows Desktop Search«, page 7)...
```

- ▶ Registered properties must not conflict in GUID+ID or name with existing Windows properties (including the shell properties listed in Appendix A, »Predefined Metadata Properties«). A list of Windows properties can be found at [msdn.microsoft.com/en-us/library/bb763010\(VS.85\).aspx](http://msdn.microsoft.com/en-us/library/bb763010(VS.85).aspx)
- ▶ You need proper privileges to write into the `HKEY_LOCAL_MACHINE` registry hive to run the `registerpropdesc` tool.
- ▶ Since the registry stores only the name of the property description file (but not its contents), the `propdesc` file must remain at the registered location to make sure that the property descriptions will be available for searches.
- ▶ The `propdesc` file must be readable for all users.
- ▶ You can register multiple property files. However, two property description files must not include descriptions of the same property (as characterized by GUID+ID).

Use the `-u` option to remove a previously registered property description:

```
registerpropdesc -u "c:\property\acme.propdesc"
```

**Search for metadata properties.** Once you configured custom metadata properties, you can search for properties. Table 3.4 contains examples for property queries. The names of all predefined properties for Windows Search are listed in Appendix A, »Predefined Metadata Properties«. The syntax description for property-based queries can be found at

[www.microsoft.com/windows/desktopsearch/addresources/advanced.mspx](http://www.microsoft.com/windows/desktopsearch/addresources/advanced.mspx)

Shell properties can be queried interactively according to the samples shown in Table 1.1. Unfortunately, the Advanced Query Syntax for interactive searches does not support custom properties in Windows XP/Vista, but only in Windows 7. In Windows XP/Vista you must index metadata properties as text (see Section 3.6, »Indexing Metadata Properties as Text«, page 45) in order to include custom metadata in interactive searches, or use SQL-based searches (see below).

Table 3.4 Metadata query examples for Windows Search 3.0 and above

Search term example	Explanation
<code>author:Doyle</code>	<i>author contains Doyle</i>
<code>author:"Conan Doyle"</code>	<i>author contains the words Conan Doyle</i>
<code>author:Doy</code>	<i>author starts with Doy</i>
<code>size: &lt; 500000</code>	<i>document size is less than 500,000 bytes</i>
<code>date: &lt;=4/7/08</code>	<i>modification date on or before April 7, 2008 (date format depends on system settings)</i>
<code>System.Document.DateCreated: = 09/23/2002</code>	<i>creation date is September 23, 2002 (date format depends on system settings)</i>
<code>System.MIMEType: = "application/pdf"</code>	<i>list all PDF documents in the index</i>
<code>System.Document.PageCount: = 144</code>	<i>document contains 144 pages</i>
<code>PDFlib.TETPDFFilter.bookmark:Index</code>	<i>(does not work in Windows XP/Vista) document contains a bookmark with the text Index</i>

**SQL queries for metadata properties.** SQL queries can search for predefined as well as custom properties. Some examples are provided below; they assume that indexing of all predefined properties has been enabled in the XML configuration file, and that the *predefined\_properties.propdesc* property description has been registered. We use ADO (*ActiveX Data Objects*) and PowerShell scripts to submit SQL-based queries. However, you can use the SQL statements in any other ADO or ADO.NET environment as well. A description of the SQL syntax extensions for Windows search is available at

[msdn.microsoft.com/en-us/library/bb231256\(VS.85\).aspx](http://msdn.microsoft.com/en-us/library/bb231256(VS.85).aspx)

Property searches can be applied in two directions:

- ▶ Query a specific property value: which documents have *Doyle* as author?
- ▶ Query the value of a specific property in one or more files: who is the author of this document?

**PowerShell for submitting SQL queries.** Windows PowerShell is included in Windows 7 and Windows Server 2008, and can be installed on Windows XP SP2, Windows Server 2003, and Windows Vista. The installation files can be downloaded from the following location:

[www.microsoft.com/windowsserver2003/technologies/management/powershell/download.msp](http://www.microsoft.com/windowsserver2003/technologies/management/powershell/download.msp)

Sample PowerShell query scripts are installed with TET PDF IFilter. The following PowerShell script lists all bookmarks for all documents:

```
$objConnection = New-Object -comobject ADODB.Connection
$objRecordset = New-Object -comobject ADODB.Recordset
$objConnection.Open("Provider=Search.CollatorDSO;Extended
Properties='Application=Windows';")

$objRecordSet.Open(
"SELECT System.ItemPathDisplay, `PDFlib.TETPDFIFilter.bookmark` FROM SYSTEMINDEX ",
$objConnection)

While ($objRecordset.EOF -ne $True) {
    $private:item = $objRecordset.Fields.Item("System.ItemPathDisplay")
    Write-Output $item.Value
    $item = $objRecordset.Fields.Item("PDFlib.TETPDFIFilter.bookmark")
    Write-Output $item.Value
    $objRecordset.MoveNext()
}
```

The following PowerShell script lists all documents where at least one bookmark contains the text *alpha*:

```
$objConnection = New-Object -comobject ADODB.Connection
$objRecordset = New-Object -comobject ADODB.Recordset
$objConnection.Open("Provider=Search.CollatorDSO;Extended
Properties='Application=Windows';")

$objRecordSet.Open("SELECT System.ItemPathDisplay FROM SYSTEMINDEX WHERE " +
    "`PDFlib.TETPDFIFilter.bookmark` = SOME ARRAY ['alpha']", $objConnection)

While ($objRecordset.EOF -ne $True) {
    $private:item = $objRecordset.Fields.Item("System.ItemPathDisplay")
    Write-Output $item.Value
}
```

```
    $objRecordset.MoveNext()  
}
```

**VBScript for submitting SQL queries.** The following VBScript code lists all documents along with the name of the application which created the document. Unfortunately, only some shell properties can be used with VBScript queries; other properties cannot be queried:

```
On Error Resume Next
```

```
Set objConnection = CreateObject("ADODB.Connection")  
Set objRecordSet = CreateObject("ADODB.Recordset")
```

```
objConnection.Open "Provider=Search.CollatorDSO;Extended  
Properties='Application=Windows';"
```

```
objRecordSet.Open "SELECT System.ItemPathDisplay, System.ApplicationName FROM  
SYSTEMINDEX", objConnection
```

```
objRecordSet.MoveFirst
```

```
Do Until objRecordset.EOF  
    Wscript.Echo objRecordset.Fields.Item("System.ItemPathDisplay")  
    Wscript.Echo objRecordset.Fields.Item("System.ApplicationName")  
    Wscript.Echo ""  
    objRecordset.MoveNext  
Loop
```

**Complex property queries with SQL.** The following samples contain only the relevant SQL statement and can be used in any SQL environment. For using these statements in PowerShell scripts you must apply proper quoting, e.g. `"PDFlib.TETPDFIFilter.width"` instead of `PDFlib.TETPDFIFilter.width`. Many examples below use array queries for vector properties (see Section 3.5, »Multivalued Properties«, page 44). Details on the syntax for array queries can be found at

[msdn.microsoft.com/en-us/library/bb231264\(VS.85\).aspx](http://msdn.microsoft.com/en-us/library/bb231264(VS.85).aspx)

- ▶ List all documents where the author contains *Doyle*:

```
SELECT System.ItemPathDisplay FROM SYSTEMINDEX WHERE CONTAINS("System.Author",  
'Doyle')
```

- ▶ List all documents where the author starts with *Rudy*:

```
SELECT System.ItemPathDisplay FROM SYSTEMINDEX WHERE CONTAINS("System.Author",  
'Rudy*')
```

- ▶ List all documents which conform to PDF/A-1a:

```
SELECT System.ItemPathDisplay FROM SYSTEMINDEX WHERE "PDFlib.TETPDFIFilter.pdfa" =  
'PDF/A-1:2005'
```

- ▶ List all documents where at least one of the bookmarks begins with *alph*:

```
SELECT System.ItemPathDisplay FROM SYSTEMINDEX WHERE "PDFlib.TETPDFIFilter.bookmark"  
LIKE SOME ARRAY ['alph%']
```

- ▶ List all documents containing at least one of the fonts *Bembo* and *TimesNewRoman*:

```
SELECT System.ItemPathDisplay FROM SYSTEMINDEX WHERE "PDFlib.TETPDFIFilter.font" =
```

```
SOME ARRAY ['Bembo', 'TimesNewRoman']
```

- ▶ List all documents containing both the *Bembo* and *Bembo-Bold* fonts:

```
SELECT System.ItemPathDisplay FROM SYSTEMINDEX WHERE "PDFlib.TETPDFIFilter.font" =  
SOME ARRAY ['Bembo'] AND "PDFlib.TETPDFIFilter.font" = SOME ARRAY ['Bembo-Bold']
```

- ▶ List all documents with at least one page which has *width*=595. Note the single quote characters around 595 since *width* has type *Double*; the quotes are not required for type *Int32*:

```
SELECT System.ItemPathDisplay FROM SYSTEMINDEX WHERE "PDFlib.TETPDFIFilter.width" =  
SOME ARRAY ['595']
```

- ▶ List all documents with at least one page with *width*=200 and at least one page with *height*=150:

```
SELECT System.ItemPathDisplay FROM SYSTEMINDEX WHERE "PDFlib.TETPDFIFilter.width" =  
SOME ARRAY ['200'] AND "PDFlib.TETPDFIFilter.height" = SOME ARRAY ['150']
```

- ▶ List all documents with at least one tennis image (Photoshop category *TEN=tennis*):

```
SELECT System.ItemPathDisplay FROM SYSTEMINDEX WHERE  
"PDFlib.TETPDFIFilter.images.photoshop.SupplementalCategories" = SOME ARRAY ['TEN']
```

- ▶ List all documents with a PDF version higher than 1.6 (the PDF version will be returned by TET PDF IFilter as a string which contains the number \* 10, e.g. 16 for PDF 1.6):

```
SELECT System.ItemPathDisplay FROM SYSTEMINDEX WHERE "PDFlib.TETPDFIFilter.pdfversion"  
> '16'
```

### 3.8 Metadata in SharePoint and Search Server

Metadata property handling in Search Server is almost identical to metadata handling in SharePoint. This section covers configuration steps for both products. In a few cases product-specific details are mentioned explicitly.

You can programmatically control metadata handling in SharePoint using the Enterprise Search Administration namespace *Microsoft.Office.Server.Search.Administration*. The following concepts are used for handling metadata properties in SharePoint:

- ▶ *Crawled properties* are created by TET PDF IFilter when indexing (crawling) PDF documents. Crawled properties can have multiple values. They are controlled via the TET PDF IFilter configuration file. Sharepoint will search crawled properties like other fields, but advanced features for property queries are not be available.
- ▶ *Managed properties* can be used in search queries and advanced search, and displayed in search results.

More details on managed properties in the Advanced Search Page can be found at

[msdn.microsoft.com/en-us/library/bb428648.aspx](http://msdn.microsoft.com/en-us/library/bb428648.aspx)  
[msdn.microsoft.com/en-us/library/bb608302.aspx](http://msdn.microsoft.com/en-us/library/bb608302.aspx)

**XML configuration for TET PDF IFilter use with SharePoint.** Table 3.5 lists requirements and recommendations related to the XML configuration for TET PDF IFilter when working with SharePoint.

Table 3.5 XML configuration for SharePoint

element	attribute	requirements and recommendation
Filtering	uselidentifier	Set to false to force GUID+name treatment of all properties including the predefined properties.
Property	emitAsVector	Must be true for properties which may have multiple values (see Section 3.5, »Multivalued Properties«, page 44).
Property	friendlyName	Since GUID+name treatment facilitates locating properties in the list, we recommend the use of this attribute (see »Property identification and GUIDs«, page 40).

**Configure custom metadata properties.** Proceed as follows to prepare custom metadata properties for indexing:

- ▶ Run a full crawl. During the crawl TET PDF IFilter will report the properties which are configured in the XML configuration file and found in one or more documents. This is required for SharePoint to pick up the newly found crawled properties.
- ▶ SharePoint will generate synthetic names (e.g. »Category 1«, »Category 2«, etc.) for all new property categories. A PowerShell script which is installed with TET PDF IFilter will create a list of category names and the corresponding GUIDs. Run the script as follows:

```
list_categories.ps1 <site URL>
```

In the resulting list output you can identify categories via their GUID; compare the GUID to those in *PropertySet/@guid* in the XML configuration file for TET PDF IFilter (if you created custom properties) or the property set GUIDs in Appendix A, »Pre-

defined Metadata Properties» (if you use properties from the predefined property set collections).

- ▶ Rename the synthetic category names created by SharePoint with user-friendly names after identifying the categories by the GUIDs returned by the `list_categories.ps1` script:

SharePoint: Click *Start, SharePoint 3.0 Central Administration*. In the column on the left-hand side click *Shared Services Administration: SharedServices1* (or similar), *Search Settings, Metadata Property Mappings*. Again in the column on the left-hand side click *Crawled Properties*. In the *Crawled Properties View* open the drop-down menu that appears for a category name and click *Edit Category*. In the *Edit Category* dialog change the name of the category.

- ▶ SharePoint: Click *Start, SharePoint 3.0 Central Administration*. In the column on the left-hand side click *Shared Services Administration: SharedServices1* (or similar), *Search Settings, Metadata Property Mappings*  
Search Server: Click *Start, All Programs, Microsoft Search Server, Search Server 2008 Administration*. This will open a page titled *Metadata Property Mappings*.
- ▶ Click *New Managed Property* (see Figure 3.1).
- ▶ Enter the property's name, description, and data type, and click the button *Add Mapping* which is located in the lower right corner to the right of the field *Crawled properties mapped to this managed property*.
- ▶ The drop-down menu *Select a category* will filter the list of crawled properties which are displayed in the list box titled *Select a crawled property*. The list box displays a list of properties along with their category name and property identifier or friendly name. The choice of identifier or friendly name depends on the property definition in the XML configuration file of TET PDF IFilter, see Appendix , »Configure custom

Shared Services Administration: SharedServices1 > Search Settings > Managed Properties > Add Managed Property

## New Managed Property

Use this page to view and change the settings of this property.

<b>Name and type</b> Type a name for this property, and select the type of information you want to store in this property.	Property name: <input type="text" value="EbookDateOfBirth"/> Description: <input type="text" value="The XMP property 'eb:DateOfBirth' that is defined in the TET PDF IFilter XML configuration file (GUID '5eac0060-1ba4-11dd-92c4-0002a5d5c51b' property id 21)"/> The type of information in this property: <input type="radio"/> Text <input type="radio"/> Integer <input type="radio"/> Decimal <input checked="" type="radio"/> Date and Time <input type="radio"/> Yes/No								
<b>Content using this property</b> This section displays the number of items found with this property.	Number of items found with this property:								
<b>Mappings to crawled properties</b> A list of crawled properties mapped to this managed property is shown. To use a crawled property in the search system, map it to a managed property. A managed property can get a value from a crawled property based on the order specified using the Move Up and Move Down buttons or from all the crawled properties mapped.	<input checked="" type="radio"/> Include values from all crawled properties mapped <input type="radio"/> Include values from a single crawled property based on the order specified Crawled properties mapped to this managed property: <table border="1"><tr><td>Starter Property Set:21(Date and Time)</td><td>Move Up</td></tr><tr><td></td><td>Move Down</td></tr><tr><td></td><td>Add Mapping</td></tr><tr><td></td><td>Remove Mapping</td></tr></table>	Starter Property Set:21(Date and Time)	Move Up		Move Down		Add Mapping		Remove Mapping
Starter Property Set:21(Date and Time)	Move Up								
	Move Down								
	Add Mapping								
	Remove Mapping								
<b>Use in scopes</b> Indicates whether this property will be available for use in defining search scopes.	<input type="checkbox"/> Allow this property to be used in scopes								

Fig. 3.1  
Adding managed  
properties in  
SharePoint

metadata properties«. Select a newly crawled property, assign a name to the managed property, and save it.

**Sample PowerShell script output.** The following listing shows the sequence of running the PowerShell scripts for the *litwaredemo* site:

```
PS C:\> & "C:\Program Files\PDFLib\TET PDF IFilter 4.0\IFilter clients\Sharepoint\  
list_property_categories.ps1" http://litwaredemo
```

```
"Category 1" 007867f0-c59b-43fc-ab1e-8eee77057254  
"Category 2" 1e3ee840-bc2b-476c-8237-2acd1a839b22  
"Category 5" c60e822a-074f-4bd5-9889-6ebd372f2000  
"Category 6" 17eb8447-fc9b-4d4d-81df-31e9aa770cbf  
"Category 7" 5eac0060-1ba4-11dd-92c4-0002a5d5c51b  
"Dublin Core" d92bb3ca-ce2b-4b9b-972a-5bf54b468171  
...
```

The generated list shows that »*Category 7*« belongs to the property set defined in *starter\_advanced\_search.xml*. Rename it to »*Starter Property Set*« as described above.

**Preparing SharePoint XML for searches on managed properties.** In this step you will prepare the required XML for adding managed properties to Advanced Search. The next section describes how to actually apply this XML. We will describe the XML with examples below:

For each property you must create a *PropertyDef* element as child of the *PropertyDefs* element:

```
<PropertyDef Name="EbookDateOfBirth" DataType="datetime" DisplayName="Ebook Date of  
Birth"/>
```

The *Name* attribute must correspond to the property name, the *DataType* attribute describes the property's type according to Table 3.6, and *DisplayName* contains an arbitrary name which will be presented in the user interface.

In order to make the new managed property available for searches on PDF documents, add the property to the *ResultType* element:

```
<ResultType DisplayName="PDF Documents" Name="pdfdocuments">  
  <Query>FileExtension='pdf'</Query>  
  <PropertyRef Name="Author"/>  
  <PropertyRef Name="Description"/>  
  <PropertyRef Name="FileName"/>  
  <PropertyRef Name="Size"/>  
  <PropertyRef Name="Path"/>  
  <PropertyRef Name="Created"/>  
  <PropertyRef Name="Write"/>  
  <PropertyRef Name="CreatedBy"/>  
  <PropertyRef Name="ModifiedBy"/>  
  <PropertyRef Name="EbookDateOfBirth"/>  
</ResultType>
```

A complete XML file (*starter\_advanced\_search.xml*) for all properties in the starter set is installed with TET PDF IFilter. It has been created with Microsoft's Virtual PC image for SharePoint evaluation. You can use the XML for evaluation and testing. Note, however,

Table 3.6 Property data types for SharePoint

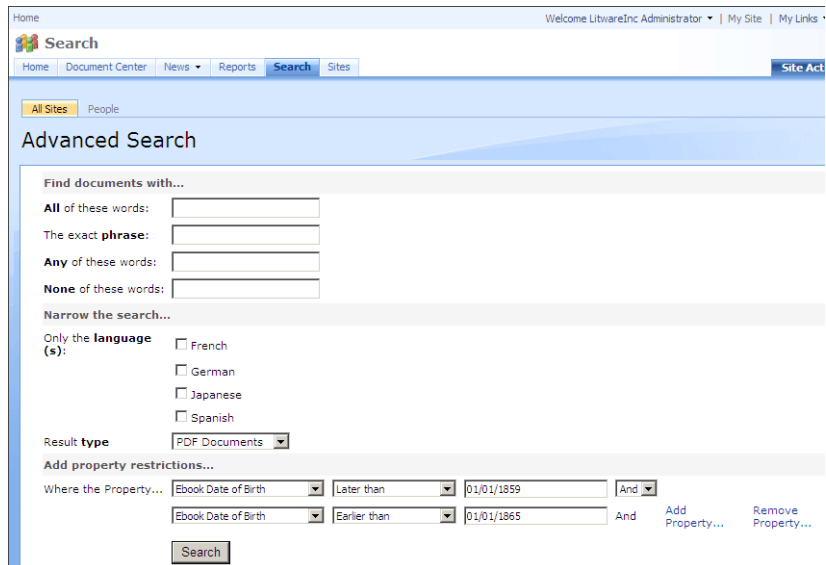
data type in TET PDF IFilter	data type for SharePoint
Int32	integer
Double	decimal
Boolean	boolean
DateTime	datetime
String	text

that XML for production sites must carefully be constructed based on the existing XML of the site and the newly configured properties.

**Search for custom metadata properties.** In order to implement advanced metadata search you must configure TET PDF IFilter to index the property (see Section 3.4, »Custom Metadata Properties«, page 42). This will instruct TET PDF IFilter to create a crawled property. Then you must make a new managed property available in the *Advanced Search* page as follows:

- ▶ Log on to the SharePoint site at and navigate to *Advanced Search*. This is the search form where we want to add a new managed property under *Add property restrictions...* at the bottom of the page.
- ▶ In the upper-right corner of the page, click *Site Actions*. In the drop-down menu that opens, click *Edit Page*. This will change the look of the page and adds controls for modifying the page.
- ▶ In the upper-right corner of the box titled *Advanced Search Box*, click *edit*. In the drop-down menu that opens, select *Modify Shared Web Part*. This surrounds the *Advanced Search Box* with a dashed line, and to the right a new box appears which is also titled *Advanced Search Box*. It contains entries *Search box*, *Scopes*, *Properties*, etc.

Fig. 3.2  
Advanced Search Page  
in SharePoint with  
custom property



- ▶ Expand the *Properties* category and look for the field *Properties* which contains XML. Click into the field, and a button with three dots inside and a tool tip *Click to use builder* will appear. Clicking on the button will open a text entry box with XML. This XML must be edited according to the example below; you may want to copy the XML to an XML editor and paste it back after editing.
- ▶ After closing the text edit box, click *Ok* at the bottom of box where the editing took place, and click *Check In to Share Draft* at the top of the page. This brings you back to the normal look of the *Advanced Search* form, and if *All Results* is selected in the *Result type* drop-down menu, the new property name will appear in the (*Pick Property*) menu at the bottom of the page under *Add property restrictions...* It may also be necessary to click *Publish* at the top of the *Advanced Search* form in addition to clicking *Check In to Share Draft* to make the modified form available to all users.

Now you can search for documents with specific entries in the managed property. Figure 3.2 shows the *Advanced Search* page with the custom property *Ebook Date of Birth* in the lower section.

*Note* If you suspect that individual documents are missing from the list of search results, SharePoint may have removed them as duplicates. In order to disable duplicate removal click the »View duplicates« link on the *Search Results* page.

**Search for metadata properties.** Table 3.7 contains examples for property queries. Property queries are constructed according to the following simple scheme:

<property name>:<value>

The syntax description for property-based queries can be found at [msdn.microsoft.com/en-us/library/ms582745.aspx](http://msdn.microsoft.com/en-us/library/ms582745.aspx)

Table 3.7 Metadata query examples for SharePoint

Search term example	Explanation
author:Doyle	author contains Doyle
author:Arthur author:Doyle	author contains Arthur and Doyle
author:"Arthur Conan Doyle"	author contains the exact text Arthur Conan Doyle

## 3.9 Metadata in SQL Server

SQL Server does not support metadata property indexing or searching. By default, all properties will therefore be ignored. In order to implement metadata queries we recommend to index metadata properties as text (see Section 3.6, »Indexing Metadata Properties as Text«, page 45).

**XML configuration for SQL Server.** Table 3.8 lists requirements and recommendations related to the XML configuration for TET PDF IFilter when working with SQL Server.

Table 3.8 XML configuration for SQL Server

<i>element</i>	<i>attribute</i>	<i>requirements and recommendation</i>
<b>Filtering</b>	<b>metadataHandling</b>	Set this attribute to <code>propertyAndText</code> or <code>propertyAndPrefixedText</code> to enable indexing properties as text (see Section 3.6, »Indexing Metadata Properties as Text«, page 45).
<b>Property</b>	<b>textIndexPrefix</b>	Set the prefix if you want to explicitly search for properties.

**Search for metadata properties.** Since there is no dedicated support for searching properties in SQL server, you must query for metadata properties in a full-text query. Once you enabled indexing of properties as text, you can search for documents with the author *Arthur Conan Doyle* as follows:

```
SELECT name FROM DocumentTable WHERE CONTAINS(*,"TET_System_Author_Arthur Conan Doyle")
GO
```

Use the following statement to query for documents where the author starts with *Arthur*:

```
SELECT name FROM DocumentTable WHERE CONTAINS(*,"System_Author_Arthur*")
GO
```

## 3.10 Metadata in Indexing Service

**Create a column definition file.** In order to use custom metadata properties with Indexing Service you must prepare a column definition file (often called *msscolumn.txt*) which specifies the names, data types, and GUIDs of properties. The property entries must match the corresponding property descriptions in the XML configuration file. Column definitions must be specified according to the following syntax:

```
"FriendlyName" (Type) = PropertySetGuid PropertySpec
```

Each line contains all or a subset of the following components:

- ▶ *FriendlyName* (must be enclosed with double quotation marks): alias name for the property (must not contain whitespace): should match the *name* attribute of the *Property* element in the XML configuration file (or the name of one of the predefined properties listed in Appendix A, »Predefined Metadata Properties«)
- ▶ *Type* (optional; must be enclosed with parentheses): must match the *type* attribute of the *Property* element in the XML configuration file, using the type designations shown in Table 3.9. If this entry is missing, the default type *DBTYPE\_WSTR* | *DBTYPE\_BYREF* (i.e. String) will be used.
- ▶ *PropertySetGuid*: must match the *guid* attribute of the *PropertySet* element in the XML configuration file.
- ▶ *PropertySpec*: must match the *friendlyname* attribute or the *identifier* attribute of the *Property* element in the XML configuration file. The *friendlyname* can only be used if the *identifier* attribute is missing or if the *uselidentifier* attribute of the *Filtering* element is *false*. The identifier can be specified in decimal or hexadecimal (starting with *0x*) notation.

Empty lines and lines beginning with a number sign »#« will be ignored and can be used for comments. The following example demonstrates a few property descriptions (the first line with the *[Names]* entry is important):

```
[Names]
"fontcount" (DBTYPE_I4) = 5eac0060-1ba4-11dd-92c4-0002a5d5c51b 2
"weblink" (DBTYPE_WSTR | DBTYPE_BYREF) = 5eac0060-1ba4-11dd-92c4-0002a5d5c51b 6
```

Table 3.9 Property data types for Indexing Service

<i>data type in TET PDF IFilter</i>	<i>data type in property descriptions in mscolumn.txt</i>	<i>data type for Indexing Service (interactive editing of properties)</i>
<i>Int32</i>	<i>DBTYPE_I4</i>	<i>VT_I4</i>
<i>Double</i>	<i>DBTYPE_R8</i>	<i>VT_R8</i>
<i>Boolean</i>	<i>DBTYPE_BOOL</i>	<i>VT_BOOL</i>
<i>DateTime</i>	<i>DBTYPE_DATE</i>	<i>VT_DATE</i>
<i>String</i>	<i>DBTYPE_WSTR</i>   <i>DBTYPE_BYREF</i> for properties with vector treatment: <i>DBTYPE_WSTR</i>   <i>DBTYPE_VECTOR</i>	<i>VT_LPWSTR</i>

*Note* Column definition files do not seem to work with 64-bit versions of Indexing Service.

**Predefined properties.** A column definition file for all predefined properties (see Appendix A, »Predefined Metadata Properties«) is installed with TET PDF IFilter. It can be configured according to the steps described in the next section. Although the property definitions are built into TET PDF IFilter, you must enable the desired property set collections in the XML configuration file (see Section 3.3, »Predefined Metadata Properties«, page 41). Using this column definition file for all predefined properties is a convenient method to see which properties are actually found in your documents since only detected properties will be displayed in the management console.

**XML configuration for Indexing Service.** Table 3.10 lists requirements and recommendations related to the XML configuration for TET PDF IFilter when working with Indexing Service.

Table 3.10 XML configuration for Indexing Service

element	attribute	requirements and recommendation
Property	emitAsVector	Must be false for properties which may have multiple values if the property's type attribute is different from String (see Section 3.5, »Multivalued Properties«, page 44).

**Configure custom metadata properties.** Proceed as follows to prepare custom metadata properties for indexing; some steps are not required for predefined properties but only for custom properties:

- ▶ (Not necessary for predefined properties) Create configuration entries for TET PDF IFilter in the XML configuration file (see Section 3.4, »Custom Metadata Properties«, page 42).
- ▶ (For predefined properties use the column definition file which is installed with TET PDF IFilter) Create a column definition file with property descriptions according to the description in »Create a column definition file«, page 59.
- ▶ Click *Start, Run...*, and type *regedt32.exe* to launch the registry editor. Navigate to the following entry:

```
HKEY_LOCAL_MACHINE\SYSTEM\CurrentControlSet\Control\ContentIndexCommon
```

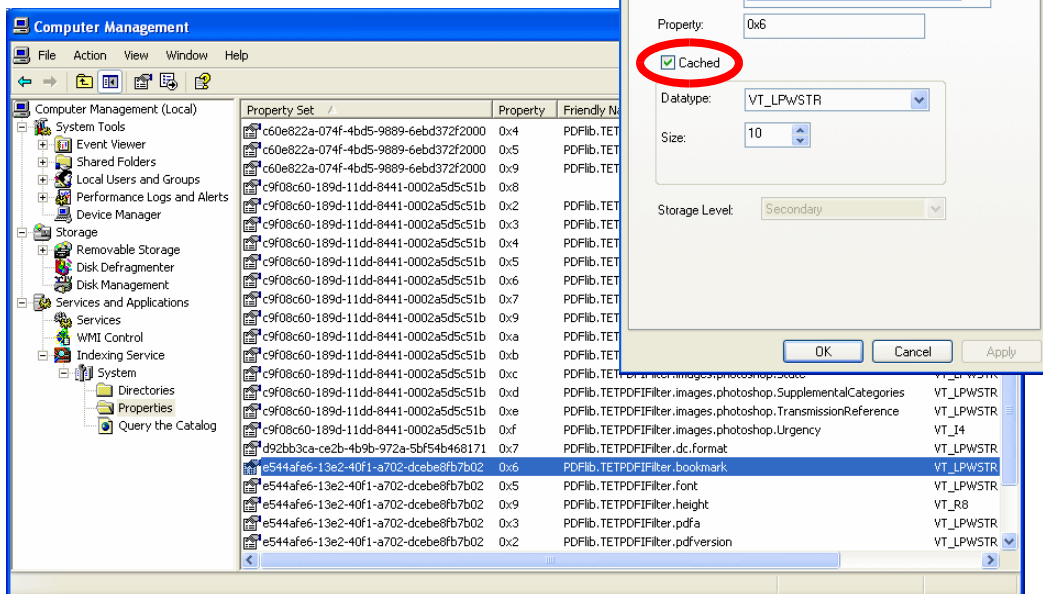
Locate the key *DefaultColumnFile*. If this key exists (which may be the case if you have Windows Search installed) note the file name it contains. A typical value is

```
C:\Documents and Settings\All Users\Application Data\Microsoft\
Search\Config\msscolmn.txt
```

If the key exists, you can edit the existing text file at that location in the next step. If the key does not exist, click *Edit, New, String Value* to create it, and add a full path name pointing to the configuration file created in the next step.

- ▶ Edit the existing text file *msscolmn.txt* (or create a new one at an arbitrary location, as appropriate), and insert the property definitions prepared earlier.
- ▶ Rebuild the catalog. Make sure that for each configured property at least one file has been indexed. Properties will only be available for the next configuration steps if they have been picked up during the indexing process.
- ▶ Navigate to *Services and Applications, Indexing Service, System*, right-click on *Properties*, and select *All Tasks, Refresh List*. For each property found in the indexed documents a separate line will be displayed. You can identify properties by their GUID in the first

Fig. 3.3.  
Management Console with property  
list for Indexing Service



column (called *Property Set*), and the numerical identifier or the property name in the second column (called *Property*). The choice of identifier vs. name depends on the selected method for identifying properties (GUID+name or GUID+ID, see »Property identification and GUIDs«, page 40). The third column (called *Friendly Name*) contains the user-friendly property name specified in the column definition file.

- ▶ Double-click each custom property that you want to use. In the resulting dialog activate the *Cached* checkbox (see Figure 3.3). Only cached properties can be used for searching.
- ▶ Stop and restart Indexing Service, and rebuild the catalog.

**Search for metadata properties.** Once you configured custom metadata properties, you can search for properties. Table 3.11 contains examples for property queries. The names of all predefined properties for Indexing Service are listed in Appendix A, »Predefined Metadata Properties«. The syntax description for property-based queries can be found at

[msdn.microsoft.com/en-us/library/ms690541\(VS.85\).aspx](http://msdn.microsoft.com/en-us/library/ms690541(VS.85).aspx)

Table 3.11 Metadata query examples for Indexing Service

<b>Search term example</b>	<b>Explanation</b>
@DocAuthor Doyle	author contains Doyle
@DocAuthor Conan Doyle	author contains Conan Doyle
@DocAuthor Doy*	a word within the author name starts with Doy
@size < 500000	document size is less than 500,000 bytes
@contents Mow*	document contents contain words starting with Mow; Note that the »*« wildcard does not work to the left of text, but only to the right.
@Write <= 2008/04/07	modification date on or before April 7, 2008 (the date format is fixed)
@System.MIMEType "application/pdf"	list all PDF documents in the index

# 4 XML Configuration File

## 4.1 Working with Configuration Files

The operation of TET PDF IFilter can be controlled with an XML configuration file. A sample configuration file is installed with TET PDF IFilter.

**Specifying the location of the configuration file.** The configuration file can be specified in the following registry key which contains a String value with the full path name of the configuration file:

```
HKEY_LOCAL_MACHINE\SOFTWARE\PDFlib\TET PDF IFilter4\configfile
```

*Note It is recommended to place XML configuration files outside the installation directory of TET PDF IFilter. This way the configuration will survive if the installation directory changes, e.g. after installing an updated version of TET PDF IFilter.*

If this registry entry does not exist or contains an empty string, the default configuration will be used. If the configuration file specified in the registry entry cannot be opened, a warning will be written to the application event log, and the default configuration will be used for indexing. If XML parsing of the configuration file fails, a warning will be written to the event log, and no indexing will be done.

*Note The installer will not create a registry entry for a configuration file. This must be done by the user if required.*

Only a single configuration file can be used for TET PDF IFilter on a machine. However, the 32-bit and 64-bit versions can use different configuration files on the same machine since the above registry entry will be searched in the 32-bit and 64-bit registry, respectively.

If you changed the configuration file you must rebuild the index for the changes to become active.

**Predefined XML configuration files.** Several predefined configuration files are installed with TET PDF IFilter:

- ▶ The file *default.xml* describes the internal default settings of TET PDF IFilter. It may serve as a starting point for creating a customized configuration file.
- ▶ The file *starter.xml* contains property definitions which can be used with the starter samples that are installed with TET PDF IFilter.

**XML namespace and schema description.** Table 4.1 lists the elements and attributes which are available in the XML configuration file. The namespace URI for the XML configuration is

```
http://www.pdflib.com/XML/TET_PDF_IFilter3/TET_PDF_IFilter_Config-3.0.xsd
```

*Note The schema namespace URI and download location contain the version number 3 since the current schema is compatible with the schema used in TET PDF IFilter 3.0.*

An XSD schema description for the XML configuration language is installed with TET PDF IFilter, and can also be found at the URI above which serves as namespace identifier. You can use the schema file with a suitable XML editor to make sure that the generated XML configuration file adheres to the syntax expected by TET PDF IFilter.

**Custom data types for XML elements and attributes.** Except where a value description is provided, all elements are empty. The following custom data types are used in the XML configuration file:

- ▶ LCID: hexadecimal or decimal locale identifier; see

*[msdn.microsoft.com/en-us/library/ms776294\(VS.85\).aspx](http://msdn.microsoft.com/en-us/library/ms776294(VS.85).aspx)*

The value `0x0800` will be translated to the current system default locale.

- ▶ GUID: unique 128-bit identifier in hexadecimal notation according to ITU-T Rec. X.667 (see *[www.itu.int/ITU-T/studygroups/com17/oid/X.667-E.pdf](http://www.itu.int/ITU-T/studygroups/com17/oid/X.667-E.pdf)*). The parts must be separated by dash characters »-«. There are various tools available for creating GUIDs; you can also use online services, e.g. the one which is available at *[www.itu.int/ITU-T/asn1/uuid.html](http://www.itu.int/ITU-T/asn1/uuid.html)*
- ▶ pCOS path: extended pCOS path describing a PDF object, see pCOS Reference and the pCOS extensions described in Section »Extended pCOS paths«, page 38
- ▶ Option list: string containing an option list according to the syntax specified in the *PDFlib TET Reference Manual*.
- ▶ Language identifier: XMP language qualifier according to RFC 1766, or *x-default* which identifies the default language in the document.

## 4.2 XML Elements and Attributes

Table 4.1 contains details for the elements and attributes of the XML configuration file. More detailed information on the effects controlled by the XML configuration file can be found in the respective sections of this manual. The required and recommended settings for specific IFilter clients are listed in the client-specific sections in Chapter 3, »Metadata Properties«, page 37.

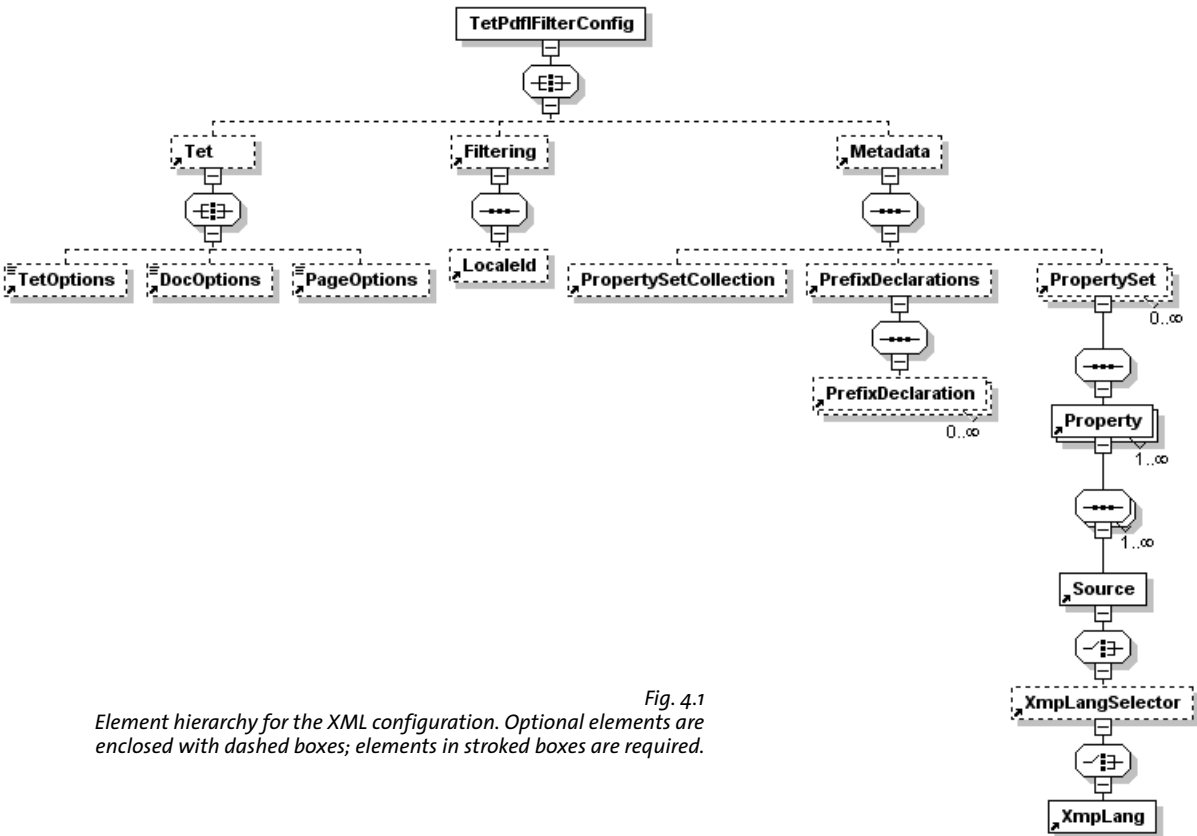


Fig. 4.1  
Element hierarchy for the XML configuration. Optional elements are enclosed with dashed boxes; elements in stroked boxes are required.

Table 4.1 XML elements and attributes in the configuration file

element	description of the element and its attributes
<b>DocOptions</b> parent: Tet	(May appear zero or one time) The value contains an option list for <code>TET_open_document()</code> in the TET kernel.
<b>Filtering</b> parent: TetPdfFilterConfig	(May appear zero or one time) Specify details of the PDF filtering process. Supported attributes: <ul style="list-style-type: none"> <li><b>indexNestedPdf</b> (Boolean; optional) Process PDF attachments recursively (see Section 2.1, »PDF Document Domains«, page 19). Default: true</li> <li><b>metadataHandling</b> (Choice; optional) Select the type of metadata handling (see Section 3.6, »Indexing Metadata Properties as Text«, page 45). Default: property <ul style="list-style-type: none"> <li><b>ignore</b> Drop all metadata properties. This may be useful for debugging or performance optimization in situations where metadata is not required.</li> <li><b>property</b> Treat metadata as properties.</li> <li><b>propertyAndPrefixedText</b> In addition to treating metadata as properties, prepend the prefix specified in <code>textIndexPrefix</code> (if present) for custom properties and the prefixes according to Table 3.2, page 45, for predefined properties, and treat the result as plain text.</li> <li><b>propertyAndText</b> In addition to treating metadata as properties, treat metadata as plain text.</li> </ul> </li> <li><b>useIdentifier</b> (Boolean; optional) Specify whether identifier or friendlyName will be used to identify properties if both of these attributes for the Property element are present. Default: true</li> </ul>
<b>LocaleId</b> parent: Filtering	(May appear zero or one time) Configure locale ID detection (see Section 2.2, »Automatic Language Detection«, page 24). Supported attributes: <ul style="list-style-type: none"> <li><b>arabic</b> (LCID; optional) LCID for Arabic text. Default: 0x0401 Arabic (SA)</li> <li><b>chinese</b> (LCID; optional) LCID for Chinese text. Default: 0x0804 Chinese (People's Republic of China)</li> <li><b>cyrillic</b> (LCID; optional) LCID for Cyrillic text. Default: 0x0419 Russian (RU)</li> <li><b>default</b> (LCID; optional) Global LCID which will be used for all text chunks if detection is disabled. Default: 0x0800 (system-locale)</li> <li><b>detection</b> (Choice; optional) Control automatic LCID detection. Default: auto <ul style="list-style-type: none"> <li><b>auto</b> Determine LCID based on script and statistical language analysis.</li> <li><b>disabled</b> Disable LCID detection; all other attributes except default and useCatalogLang will be ignored.</li> <li><b>script</b> (TET PDF IFilter 4.0) Determine LCID based on script.</li> </ul> </li> <li><b>latin</b> (LCID; optional) LCID for Latin text. Default: 0x0409 English (US)</li> <li><b>useCatalogLang</b> (Boolean; optional; TET PDF IFilter 4.0) Specify whether the Lang entry in the document's catalog will be evaluated. If true, TET PDF IFilter checks the Lang entry in the PDF document catalog. If present, the Lang entry will be converted to an LCID. If the conversion is successful the LCID overrides the value of the LocaleId/@default attribute; if the LCID belongs to one of the Arabic, Chinese, Cyrillic, or Latin scripts it overrides the value of the corresponding attribute of the LocaleId element. Default: true</li> </ul>
<b>Metadata</b> parent: TetPdfFilterConfig	(May appear zero or one time) Specify metadata properties (see Section 3.4, »Custom Metadata Properties«, page 42). If present, this element must appear after Filtering and Tet.

Table 4.1 XML elements and attributes in the configuration file

element	description of the element and its attributes
<b>PageOptions</b> parent: Tet	(May appear zero or one time) The value contains an option list for <code>TET_open_page()</code> in the TET kernel.
<b>PrefixDeclaration</b> parent: PrefixDeclarations	(May appear zero or more times) Declare a namespace prefix which can be used in Source/@xmpName. Supported attributes: <b>prefix</b> (String which does not contain colon »:« characters; required) Prefix to be used as an abbreviation for the namespace URI. <b>uri</b> (URI; required) Namespace URI
<b>PrefixDeclarations</b> parent: Metadata	(May appear zero or one time) Declare namespace prefixes for XMP properties in Xmp elements.
<b>Property</b> parent: PropertySet	(May appear one or more times) Specify a metadata property for indexing (see Section 3.4, »Custom Metadata Properties«, page 42). At least one of identifier and friendlyName must be present. If both are supplied, identifier will be used in the IFilter interface unless Filtering/@useIdentifier=false. Supported attributes: <b>identifier</b> (Integer >=2; optional) Number which uniquely identifies the property in a PropertySet. <b>emitAsVector</b> (Boolean; optional) If true, the property value will be emitted as a single vector entity, regardless of the number of values. If false, the property will be emitted as a flat value. If more than one source item was found, multiple flat properties will be emitted. Default: false <b>friendlyName</b> (String; optional) Name which uniquely identifies the property in a PropertySet. It can be used to document the property, or as an alternative to identifier. <b>precedence</b> (Choice; optional) Specifies precedence for multiple Source elements (default: first-wins): <b>first-wins</b> The first non-empty source will be used. <b>try-all</b> All non-empty sources contribute to the property. <b>textIndexPrefix</b> (String; optional) String to be prepended to the property value if Filtering/@metadataHandling is propertyAndPrefixedText. Default: empty <b>type</b> (Choice; optional) Windows data type of the metadata property. Supported choices are Boolean, DateTime, Double, Int32, and String. Default: String
<b>PropertySet</b> parent: Metadata	(May appear zero or more time) Specify filtering of a custom set of properties with the same GUID (see Section 3.4, »Custom Metadata Properties«, page 42). If present, this element must appear after PropertySetCollection and PrefixDeclarations. Supported attributes: <b>guid</b> (GUID; required) Unique 128-bit identifier for the property set in hexadecimal notation.

Table 4.1 XML elements and attributes in the configuration file

<b>element</b>	<b>description of the element and its attributes</b>
<b>PropertySet-Collection</b> parent: Metadata	(May appear zero or one time) Specify filtering of predefined property set collections (see Section 3.3, »Predefined Metadata Properties«, page 41). A list of properties can be found in Appendix A, »Predefined Metadata Properties«. Supported attributes: <b>documentXmp</b> (Boolean; required) Emit document XMP properties. Default: false <b>imageXmp</b> (Boolean; required) Emit image XMP properties. Default: false <b>internal</b> (Boolean; required) Emit internal properties of TET PDF IFilter. Default: true <b>pdf</b> (Boolean; required) Emit PDF-specific properties. Default: false <b>shell</b> (Boolean; required) Emit shell properties. Default: true
<b>Source</b> parent: Property	(May appear one or more times) Specify one or more sources for a metadata property. The ordering of elements is relevant if Property/@precedence has the value first-wins. At least one of the attributes below must be provided. Supported attributes: <b>pdfObject</b> (pCOS path; optional) Extended pCOS path for one or more PDF objects containing the property. Default: /Root/Metadata (i.e. document-level XMP) <b>xmpName</b> (String consisting of the schema's prefix, a colon »:«, and the property name; optional) Fully qualified XMP property name. A prefix can be used instead of the namespace URI provided it has been declared in a PrefixDeclaration element. This attribute will only be used if pdfobject points to one or more XMP streams. Default: empty
<b>Tet</b> parent: TetPdfFilterConfig	(May appear zero or one time) Specify processing options for the TET kernel; refer to the TET manual for a description of the option list syntax and available options. Some options will be overridden by TET PDF IFilter.
<b>TetOptions</b> parent: Tet	(May appear zero or one time) Specify an option list for Tet_set_option() in the TET kernel.
<b>TetPdfFilterConfig</b> parent: (none)	(Must appear exactly once as the root element) Root element of the XML configuration file. Supported attribute: <b>version</b> (String; optional; TET PDF IFilter 4.0) Specify the version of TET PDF IFilter for which this configuration was written. Since the TET PDF IFilter 3 configuration file didn't support this attribute the default is 3.0. New configurations should include this attribute with the appropriate version identifier (4.0 for TET PDF IFilter 4). Default: 3.0
<b>XmpLang</b> parent: XmpLangSelector	(Must appear exactly once if XmpLangSelector/@languages=subset) Specify the language of an XMP property. Supported attribute: <b>lang</b> (Language identifier; required). Name of the language; currently x-default is the only supported value.
<b>XmpLangSelector</b> parent: Xmp	(May appear zero or one time) Select a language variant of an XMP property for indexing. This is only relevant for properties with an XMP source of type Lang Alt. Supported attribute: <b>languages</b> (Choice) Specify language-specific indexing of the property (default: all): <b>all</b> All available language entries of the property will be indexed. <b>subset</b> Only the languages specified in the XmpLang element will be indexed.

## 4.3 Sample Configuration File

The following listing shows a complete XML configuration file for TET PDF IFilter:

```
<?xml version="1.0" encoding="UTF-8"?>
<!--
    XML configuration file for TET PDF IFilter
    (c) PDFlib GmbH 2008-2010    www.pdflib.com
    This file must be configured in the following registry key:
    HKEY_LOCAL_MACHINE\SOFTWARE\PDFlib\TET PDF IFilter4\configfile
-->

<n:TetPdfIFilterConfig
  xmlns:n="http://www.pdflib.com/XML/TET_PDF_IFilter3/TET_PDF_IFilter_Config-3.0.xsd"
  xmlns:xsi="http://www.w3.org/2001/XMLSchema-instance"
  xsi:schemaLocation="http://www.pdflib.com/XML/TET_PDF_IFilter3/TET_PDF_IFilter_
Config-3.0.xsd http://www.pdflib.com/XML/TET_PDF_IFilter3/TET_PDF_IFilter_Config-3.0.xsd"
  version="4.0">

  <n:Tet>
    <n:TetOptions></n:TetOptions>
    <n:DocOptions></n:DocOptions>
    <n:PageOptions></n:PageOptions>
  </n:Tet>

  <n:Filtering indexNestedPdf="true" metadataHandling="property" useIdentifier="true">
    <n:LocaleId
      detection="auto"
      useCatalogLang="true"
      default="0x0800"
      arabic="0x0401"
      chinese="0x0804"
      cyrillic="0x0419"
      latin="0x0409"/>
  </n:Filtering>

  <n:Metadata>
    <n:PropertySetCollection
      documentXmp="false"
      imageXmp="false"
      internal="true"
      pdf="false"
      shell="true"/>

    <n:PropertySet guid="b01ca440-1b9f-11dd-8b87-0002a5d5c51b">
      <n:Property identifier="2">
        <n:Source pdfObject="/Info/Producer"/>
      </n:Property>
    </n:PropertySet>
  </n:Metadata>

</n:TetPdfIFilterConfig>
```



# 5 Troubleshooting

## 5.1 TET PDF IFilter does not work at all

If TET PDF IFilter does not seem to work at all check the items below.

**Is TET PDF IFilter correctly registered?** You can use the command line tool *FiltReg.exe* to check the correct registration of TET PDF IFilter. The program lists all file extensions that have IFilters associated with them by printing the file extension and the name of the associated IFilter DLL. The *FiltReg.exe* program is installed with Microsoft Visual Studio 8 and is also included in the Windows SDK for Windows 7. For more information see

[msdn.microsoft.com/en-us/library/ms692537\(VS.85\).aspx](http://msdn.microsoft.com/en-us/library/ms692537(VS.85).aspx)

*Note* For testing the 64-bit edition of TET PDF IFilter the 64-bit version of *FiltReg.exe* is required. To get the 64-bit version it is necessary to install the Windows SDK on a 64-bit machine; otherwise the 64-bit tools will not be installed.


If TET PDF IFilter is correctly registered, the output of *FiltReg.exe* includes lines similar to the following:

Filters loaded by extension:

```
...  
.pdf --> PDFlib TET PDF IFilter 32-bit (C:\Program Files\PDFlib\TET PDF IFilter  
4.0\bin\TETPDFIFilter.dll)
```

If TET PDF IFilter is not correctly registered you must register it manually (see Section »Manual installation«, page 6).

If you have Windows Desktop Search installed, you can test proper IFilter registration as follows: in the notification area of the Windows taskbar, right-click the indexing

icon , and click *Windows Desktop Search Options..., Advanced, File Types*. This will produce a long list of file types and associated filters. In this list, scroll to *pdf* in the *Extension* column. The corresponding entry in the *Filter Description* column should read *PDFlib TET PDF IFilter 32-bit* (or 64-bit, as appropriate).

**IFilter Explorer.** Another useful tool for analyzing IFilter registration issues is Citekenet's IFilter Explorer. It examines all registered IFilters in the system and also takes into account product-specific registry entries for IFilter clients such as SQL Server, Share-Point, etc. You can download IFilter Explorer at

[www.citekenet.com/Products/IFilters/IFilterExplorer/tabid/62/Default.aspx](http://www.citekenet.com/Products/IFilters/IFilterExplorer/tabid/62/Default.aspx)

**TET PDF IFilter and Adobe Acrobat.** If you install Adobe Reader or Adobe Acrobat after TET PDF IFilter (or run Acrobat's automatic repair mode), they will overwrite the TET PDF IFilter registry entries. You can correct the situation by running the TET PDF IFilter installer in repair mode, or by manually registering the TET PDF IFilter DLL according to Section »Manual installation«, page 6.

**Is the license key available?** While TET PDF IFilter can be used without a commercial license key on Windows 2000/XP/Vista/7, it requires a license key on Windows Server 2003/2008. If you work on a server system and PDF indexing does not seem to work, the license key for TET PDF IFilter may be missing. In this case TET PDF IFilter will run in evaluation mode, which means it is restricted to small documents.

This situation can be detected by checking the Windows event log (see »Application event log«, page 76). In case of a problem with the license key there will be an entry with source *TET PDF IFilter* and category *TET Error*. Double-click on the line containing the error and examine the error message. The following text indicates that a valid license key could not be found:

```
TET API Error in TetIFilter::Init: open_document_mem:  
Invalid license key (error number 1986)
```

If you find this message you must enter the license key in the registry (see Section »Manual installation«, page 6).

## 5.2 Problems with TET PDF IFilter Operation

If TET PDF IFilter does not seem to work as expected, the analysis methods discussed below may help.

**Identifying problematic documents.** Depending on the IFilter client in use, logging entries may or may not include the names of affected files, and file names may or may not be useful. For example, Indexing Server does include file names, while Windows Desktop Search does not include them. On the other hand, SharePoint downloads the documents via HTTP and creates a temporary local copy. The event log contains the temporary local file names which are unrelated to the original URLs. As an aid for identifying the affected PDF documents the event log entries contain the file size in bytes. You can use the search engine itself to quickly identify affected documents.

- ▶ In Windows Desktop Search you can use the following query expression (assuming 12345 is the file size in bytes):

```
size: = 12345
```

- ▶ With Indexing Service use the following query (assuming 12345 is the file size in bytes):

```
@size = 12345
```

- ▶ In SharePoint you can identify failed attempts to filter a file in the SharePoint crawl log (Shared Services Administration: *SharedServices*, *Search Settings*, *Crawl Log*). The errors regarding PDF documents listed here correspond to the errors issued by TET PDF IFilter in the Windows application event log. By comparing the file size of the files in the crawl log with the entries in the event log you can identify problematic documents.

**Locked PDF documents will not be indexed.** If an application locks a PDF file, TET PDF IFilter cannot index the document. In particular, files are locked as long as they are opened in Acrobat. While the IFilter client may retry the locked document later, the index will be incomplete until the locked document is released. We therefore recommend to avoid viewing PDF documents in Acrobat during indexing.

## 5.3 PDF Documents are not or not completely indexed

SharePoint Server and Search Server are subject to limitations which affect indexing of large documents. Since these limitations are not well explained in Microsoft documentation the following notes collect information based on Microsoft support articles and blogs. These notes are not authoritative; if in doubt please contact Microsoft for guidance.

**Maximum file size.** The registry value *MaxDownloadSize* determines the maximum file size of documents which will be crawled and indexed (unit: MB, default: 16).

**Maximum growth factor.** The registry value *MaxGrowFactor* contains a factor with which the *MaxDownloadSize* value is multiplied to determine the maximum amount of text for a document that will be indexed. This factor is necessary because the text can be compressed inside the file, as is usually the case for PDF documents (unit: none, default: 4).

With the default settings a maximum of 64 MB of extracted text per document will be indexed. Depending on the exact product and version the *MaxDownloadSize* and *MaxGrowFactor* registry values can be found under the following keys in the Windows registry:

```
HKEY_LOCAL_MACHINE\SOFTWARE\Microsoft\Office Server\<version>  
  \Search\Applications\<GUID>\Gathering Manager
```

```
HKEY_LOCAL_MACHINE\SOFTWARE\Microsoft\Shared Tools\Web Server Extensions\<version>  
  \Search\Applications\<GUID>\Gathering Manager
```

```
HKEY_LOCAL_MACHINE\Software\Microsoft\SPSSearch\Gathering Manager
```

The *GUID* will vary from installation to installation. A Microsoft article on this topic can be found here:

[office.microsoft.com/en-us/sharepoint-server-help/specifying-the-file-size-that-sharepoint-portal-server-2003-can-crawl-HA00164841.aspx](http://office.microsoft.com/en-us/sharepoint-server-help/specifying-the-file-size-that-sharepoint-portal-server-2003-can-crawl-HA00164841.aspx)

**Chunk buffer size.** Another limitation affects the total number of unique words per document which can be indexed. The value *CB\_ChunkBufferSizeInMegaBytes* determines the space which is reserved for the collection of unique words per document (unit: MB, default: 8).

**Bytes reserved for document.** The value *CB\_MinBytesReservedForDoc* depends on the *CB\_ChunkBufferSizeInMegaBytes* value. It should be 2 MB less than the value of *CB\_ChunkBufferSizeInMegaBytes*, although this relation is not true for the default values (unit: bytes, default: 3,145,728).

Depending on the exact product and version the *CB\_ChunkBufferSizeInMegaBytes* and *CB\_MinBytesReservedForDoc* registry values can be found under the following keys in the Windows registry:

```
HKEY_LOCAL_MACHINE\SOFTWARE\Microsoft\Office Server\<version>  
  \Search\Global\Gathering Manager
```

HKEY\_LOCAL\_MACHINE\SOFTWARE\Microsoft\Shared Tools\Web Server Extensions\<version>  
 \Search\Global\Gathering Manager

A Microsoft support article which describes these values for Microsoft Office SharePoint Server 2007 can be found here:

*[support.microsoft.com/kb/970776/EN-US](http://support.microsoft.com/kb/970776/EN-US)*

## 5.4 Debugging Facilities

If the search results don't match your expectation and you suspect problems with the text contents extracted from the indexed documents the debugging tools discussed below may be helpful.

**Application event log.** TET PDF IFilter creates entries in the Windows event log for various events. You can check the application event log as follows:

- ▶ Windows XP: Select *Start, Settings, Control Panel, Administrative Tools, Event Viewer*; click *Application* in the left pane.
- ▶ Windows Vista/7: Click *Start*, in the *Start Search* box type *Event Viewer*, click on the *Event Viewer* program. In the Event Viewer window click on *Windows Logs, Application*.
- ▶ TET PDF IFilter filtering events create an entry with source *TET PDF IFilter*. Double-click on the line containing the error and examine the error message.

Entries in the application event log can be enabled for various classes of events by setting the registry value

```
HKEY_LOCAL_MACHINE\SOFTWARE\PDFlib\TET PDF IFilter4\4.0\logging
```

to a DWORD value according to Table 5.1. The logging level is set to 1 by default. Note that a PDF document may result in more than one error message in the event log, e.g. each damaged page may generate an entry.

Table 5.1 Logging levels for the Windows event log

Level	Summary	Logged events
0	silent	None: all error messages are suppressed
1 (default)	errors	All failed TET function calls and exceptions thrown by TET, e.g. invalid or missing license key, encrypted PDFs which require a user password, severely damaged PDF documents which cannot be repaired; problems reading the registry; problems parsing the configuration file.
2	activity	Like 1, plus all Load( ) and Init( ) IFilter interface calls; XML configuration file reading.
3	details	Like 2, plus details on IFilter interface calls for retrieving text and properties including LCID. This level creates a large number of log entries.

**Which properties and which text are emitted by TET PDF IFilter for a document?** In order to see the exact text that TET PDF IFilter extracts from a particular document, the tool *FiltDump.exe* from the Windows SDK can be used. Again, for testing the 64-bit TET PDF IFilter DLL the 64-bit version of this tool is required. For more information see

[msdn.microsoft.com/en-us/library/ms692535\(VS.85\).aspx](http://msdn.microsoft.com/en-us/library/ms692535(VS.85).aspx)

With the option `-o` the output of *FiltDump.exe* can be redirected to a UTF-16-encoded file. This makes it possible to see the exact Unicode text and the detected locale (LCID) for the text which is emitted by TET PDF IFilter. Sample invocation:

```
FiltDump.exe -o udhr_japanese.txt udhr_japanese.pdf
```

## Sample output:

```
FILE: udhr_japanese.pdf
IFILTER: CLSID == {47A1AF35-C345-475D-AE68-EB07E948BD07}
IFILTER: Using IPersistStream
IFILTER: IFilter->Init returned IFILTER_FLAGS_OLE_PROPERTIES flag
```

```
CHUNK: -----
```

```
Attribute = {007867F0-C59B-43FC-AB1E-8EEE77057254}\3 (Unknown)
idChunk = 1
BreakType = 2 (Sentence)
Flags (chunkstate) = (Value)
Locale = 1031 (0x407)
IdChunkSource = 1
cwcStartSource = 0
cwcLenSource = 0
```

```
VALUE: -----
```

```
Type = 31 (0x1f), VT_LPWSTR
Value = "4.0"
```

```
CHUNK: -----
```

```
Attribute = {007867F0-C59B-43FC-AB1E-8EEE77057254}\4 (Unknown)
idChunk = 3
BreakType = 2 (Sentence)
Flags (chunkstate) = (Value)
Locale = 1031 (0x407)
IdChunkSource = 3
cwcStartSource = 0
cwcLenSource = 0
```

```
VALUE: -----
```

```
Type = 64 (0x40), VT_FILETIME
Value = "2010/06/10:08:28:04.587"
```

```
CHUNK: -----
```

```
Attribute = {B725F130-47EF-101A-A5F1-02608C9EEBAC}\19 (System.Search.Contents)
idChunk = 11
BreakType = 2 (Sentence)
Flags (chunkstate) = (Text)
Locale = 9 (0x9)
IdChunkSource = 11
cwcStartSource = 0
cwcLenSource = 0
```

```
TEXT: -----
```

```
UDHR - Japanese
```

```
CHUNK: -----
```

```
Attribute = {B725F130-47EF-101A-A5F1-02608C9EEBAC}\19 (System.Search.Contents)
idChunk = 12
BreakType = 2 (Sentence)
Flags (chunkstate) = (Text)
Locale = 17 (0x11)
IdChunkSource = 12
cwcStartSource = 0
cwcLenSource = 0
```

TEXT: -----  
...text contents of the document...

**TET kernel logging.** You can enable detailed TET kernel logging by setting suitable TET options in the XML configuration file (make sure to specify the file name of the XML configuration file in the registry, see Chapter 4, »XML Configuration File«, page 63):

```
<Tet>  
  <TetOptions>logging={filename=C:\debug.log classes={pcos=2}}</TetOptions>  
</Tet>
```

This will create a log file with details about internal calls to TET functions, error messages, etc. Make sure to use a file name which will be writable for the service which calls TET PDF IFilter, and keep in mind that TET logging creates lots of output and slows down the filtering process.

# A Predefined Metadata Properties

The properties listed in Table A.1 are built into TET PDF IFilter, and therefore do not require any custom configuration. Although the actual property definitions are built into TET PDF IFilter, you must enable the desired property set collections in the XML configuration file (see Section 3.2, »Predefined Metadata Properties«, page 29) in order to use these properties. For Windows Search you must register the properties with *registerpropdesc.exe* tool; for Indexing Service you must configure the corresponding column definition file.

Table A.1 Property handling in TET PDF IFilter: predefined property set collections

<i>property name for Windows Search and Indexing Service (IS); also used to derive a prefix if the property is indexed as text</i>	<i>data type</i>	<i>multi-valued</i>	<i>property set GUID/property ID</i>	<i>source: XMP property or pCOS path</i>
<b>Shell property set collection</b>				
<i>System.Document.Contributor</i>	<i>String</i>	<i>yes</i>	<i>F334115E-DA1B-4509-9B3D-119504DC7ABB/100</i>	<i>dc:contributor</i>
<i>System.Document.DateCreated</i>	<i>DateTime</i>	<i>no</i>	<i>F29F85E0-4FF9-1068-AB91-08002B27B3D9/12</i>	<i>xmp:CreateDate, /Info/CreationDate</i>
<i>System.Document.DateSaved</i>	<i>DateTime</i>	<i>no</i>	<i>F29F85E0-4FF9-1068-AB91-08002B27B3D9/13</i>	<i>xmp:ModifyDate, /Info/ModDate</i>
<i>System.Document.DocumentID</i>	<i>String</i>	<i>no</i>	<i>E08805C8-E395-40DF-80D2-54FoD6C43154/100</i>	<i>dc:identifier</i>
<i>System.Document.PageCount (IS: DocPageCount)</i>	<i>Int32</i>	<i>no</i>	<i>F29F85E0-4FF9-1068-AB91-08002B27B3D9/14</i>	<i>length:pages</i>
<i>System.Document.Version</i>	<i>String</i>	<i>no</i>	<i>D5CDD502-2E9C-101B-9397-08002B2CF9AE/29</i>	<i>xmpMM:VersionID</i>
<i>System.Search.Contents (WDS 2: n/a, Indexing Service: Contents)</i>	<i>String</i>	<i>yes</i>	<i>B725F130-47EF-101A-A5F1-02608C9EEBAC/19</i>	<i>text contents of PDF pages</i>
<i>System.Title (WDS 2.6 and IS: DocTitle)</i>	<i>String</i>	<i>no</i>	<i>F29F85E0-4FF9-1068-AB91-08002B27B3D9/2</i>	<i>dc:title["x-default"], /Info/Title</i>
<i>System.Subject (WDS 2.6 and IS: DocSubject)</i>	<i>String</i>	<i>no</i>	<i>F29F85E0-4FF9-1068-AB91-08002B27B3D9/3</i>	<i>dc:description["x-default"], /Info/Subject</i>
<i>System.Author (WDS 2.6 and IS: DocAuthor)</i>	<i>String</i>	<i>yes</i>	<i>F29F85E0-4FF9-1068-AB91-08002B27B3D9/4</i>	<i>dc:creator, pdf:Author, xmp:Author, /Info/Author</i>
<i>System.Keywords (WDS 2.6 and IS: DocKeywords)</i>	<i>String</i>	<i>yes</i>	<i>F29F85E0-4FF9-1068-AB91-08002B27B3D9/5</i>	<i>pdf:Keywords, /Info/Keywords</i>
<i>System.MIMEType</i>	<i>String</i>	<i>no</i>	<i>0B63E350-9CCC-11Do-BCDB-00805FCCCE04/5</i>	<i>application/pdf (fixed)</i>
<i>System.DateModified (IS: Write)</i>	<i>DateTime</i>	<i>no</i>	<i>B725F130-47EF-101A-A5F1-02608C9EEBAC/14</i>	<i>xmp:ModifyDate, /Info/ModDate</i>
<i>System.ApplicationName</i>	<i>String</i>	<i>no</i>	<i>F29F85E0-4FF9-1068-AB91-08002B27B3D9/18</i>	<i>xmp:CreatorTool, /Info/Creator</i>

Table A.1 Property handling in TET PDF IFilter: predefined property set collections

<b>property name for Windows Search and Indexing Service (IS); also used to derive a prefix if the property is indexed as text</b>	<b>data type</b>	<b>multi-valued</b>	<b>property set GUID/property ID</b>	<b>source: XMP property or pCOS path</b>
System.Kind	String	no	1E3EE840-BC2B-476C-8237-2ACD1A839B22/3	Document (fixed)
<b>PDF property set collection</b>				
PDFlib.TETPDFIFilter.pdfversion (contains the PDF version multiplied by 10, e.g. »16«)	String	no	E544AFE6-13E2-40F1-A702-DCEBE8FB7B02/2	pdfversion
PDFlib.TETPDFIFilter.pdfa	String	no	E544AFE6-13E2-40F1-A702-DCEBE8FB7B02/3	pdfa
PDFlib.TETPDFIFilter.pdfx	String	no	E544AFE6-13E2-40F1-A702-DCEBE8FB7B02/4	pdfx
PDFlib.TETPDFIFilter.font	String	yes	E544AFE6-13E2-40F1-A702-DCEBE8FB7B02/5	fonts[*]/name
PDFlib.TETPDFIFilter.bookmark	String	yes	E544AFE6-13E2-40F1-A702-DCEBE8FB7B02/6	bookmarks[*]/Title
PDFlib.TETPDFIFilter.annotation	String	yes	E544AFE6-13E2-40F1-A702-DCEBE8FB7B02/7	pages[*]/annots[*]/Contents
PDFlib.TETPDFIFilter.width	Double	yes	E544AFE6-13E2-40F1-A702-DCEBE8FB7B02/8	pages[*]/width
PDFlib.TETPDFIFilter.height	Double	yes	E544AFE6-13E2-40F1-A702-DCEBE8FB7B02/9	pages[*]/height
PDFlib.TETPDFIFilter.producer	String	no	E544AFE6-13E2-40F1-A702-DCEBE8FB7B02/10	/Info/Producer
PDFlib.TETPDFIFilter.trapped	String	no	E544AFE6-13E2-40F1-A702-DCEBE8FB7B02/11	/Info/Trapped
<b>XMP document metadata property set collection (from the XMP 2005 specification)</b>				
<b>Dublin Core</b>				
PDFlib.TETPDFIFilter.dc.contributor	String	yes	D92BB3CA-CE2B-4B9B-972A-5BF54B468171/2	dc:contributor
PDFlib.TETPDFIFilter.dc.coverage	String	no	D92BB3CA-CE2B-4B9B-972A-5BF54B468171/3	dc:coverage
PDFlib.TETPDFIFilter.dc.creator	String	yes	D92BB3CA-CE2B-4B9B-972A-5BF54B468171/4	dc:creator
PDFlib.TETPDFIFilter.dc.date	DateTime	yes	D92BB3CA-CE2B-4B9B-972A-5BF54B468171/5	dc:date
PDFlib.TETPDFIFilter.dc.description	String	yes	D92BB3CA-CE2B-4B9B-972A-5BF54B468171/6	dc:description
PDFlib.TETPDFIFilter.dc.format	String	no	D92BB3CA-CE2B-4B9B-972A-5BF54B468171/7	dc:format
PDFlib.TETPDFIFilter.dc.identifier	String	no	D92BB3CA-CE2B-4B9B-972A-5BF54B468171/8	dc:identifier
PDFlib.TETPDFIFilter.dc.language	String	yes	D92BB3CA-CE2B-4B9B-972A-5BF54B468171/9	dc:language
PDFlib.TETPDFIFilter.dc.publisher	String	yes	D92BB3CA-CE2B-4B9B-972A-5BF54B468171/10	dc:publisher

Table A.1 Property handling in TET PDF IFilter: predefined property set collections

<b>property name for Windows Search and Indexing Service (IS); also used to derive a prefix if the property is indexed as text</b>	<b>data type</b>	<b>multi-valued</b>	<b>property set GUID/property ID</b>	<b>source: XMP property or pCOS path</b>
PDFlib.TETPDFIFilter.dc.relation	String	yes	D92BB3CA-CE2B-4B9B-972A-5BF54B468171/11	dc:relation
PDFlib.TETPDFIFilter.dc.rights	String	yes	D92BB3CA-CE2B-4B9B-972A-5BF54B468171/12	dc:rights
PDFlib.TETPDFIFilter.dc.source	String	no	D92BB3CA-CE2B-4B9B-972A-5BF54B468171/13	dc:source
PDFlib.TETPDFIFilter.dc.subject	String	yes	D92BB3CA-CE2B-4B9B-972A-5BF54B468171/14	dc:subject
PDFlib.TETPDFIFilter.dc.title	String	yes	D92BB3CA-CE2B-4B9B-972A-5BF54B468171/15	dc:title
PDFlib.TETPDFIFilter.dc.type	String	yes	D92BB3CA-CE2B-4B9B-972A-5BF54B468171/16	dc:type
<b>XMP Basic</b>				
PDFlib.TETPDFIFilter.xmp.Advisory	String	yes	C60E822A-074F-4BD5-9889-6EBD372F2000/2	xmp:Advisory
PDFlib.TETPDFIFilter.xmp.BaseURL	String	no	C60E822A-074F-4BD5-9889-6EBD372F2000/3	xmp:BaseURL
PDFlib.TETPDFIFilter.xmp.CreateDate	DateTime	no	C60E822A-074F-4BD5-9889-6EBD372F2000/4	xmp:CreateDate
PDFlib.TETPDFIFilter.xmp.CreatorTool	String	no	C60E822A-074F-4BD5-9889-6EBD372F2000/5	xmp:CreatorTool
PDFlib.TETPDFIFilter.xmp.Identifier	String	yes	C60E822A-074F-4BD5-9889-6EBD372F2000/6	xmp:Identifier
PDFlib.TETPDFIFilter.xmp.Label	String	no	C60E822A-074F-4BD5-9889-6EBD372F2000/7	xmp:Label
PDFlib.TETPDFIFilter.xmp.MetadataDate	DateTime	no	C60E822A-074F-4BD5-9889-6EBD372F2000/8	xmp:MetadataDate
PDFlib.TETPDFIFilter.xmp.ModifyDate	DateTime	no	C60E822A-074F-4BD5-9889-6EBD372F2000/9	xmp:ModifyDate
PDFlib.TETPDFIFilter.xmp.Nickname	String	no	C60E822A-074F-4BD5-9889-6EBD372F2000/10	xmp:Nickname
PDFlib.TETPDFIFilter.xmp.Rating	Int32	no	C60E822A-074F-4BD5-9889-6EBD372F2000/11	xmp:Rating
<b>XMP Rights Management</b>				
PDFlib.TETPDFIFilter.xmpRights.Certificate	String	no	0DE7A11C-E2C5-4EFA-8017-BECD888E7EC9/2	xmpRights:Certificate
PDFlib.TETPDFIFilter.xmpRights.Marked	Boolean	no	0DE7A11C-E2C5-4EFA-8017-BECD888E7EC9/3	xmpRights:Marked
PDFlib.TETPDFIFilter.xmpRights.Owner	String	yes	0DE7A11C-E2C5-4EFA-8017-BECD888E7EC9/4	xmpRights:Owner
PDFlib.TETPDFIFilter.xmpRights.UsageTerms	String	yes	0DE7A11C-E2C5-4EFA-8017-BECD888E7EC9/5	xmpRights:UsageTerms
PDFlib.TETPDFIFilter.xmpRights.WebStatement	String	no	0DE7A11C-E2C5-4EFA-8017-BECD888E7EC9/6	xmpRights:WebStatement
<b>XMP Basic Job Ticket</b>				
PDFlib.TETPDFIFilter.xmpBJ.JobRef	String	yes	EBC983EF-C1CF-45C8-A29E-993543A0ECFB/2	xmpBJ:JobRef

Table A.1 Property handling in TET PDF IFilter: predefined property set collections

<b>property name for Windows Search and Indexing Service (IS); also used to derive a prefix if the property is indexed as text</b>	<b>data type</b>	<b>multi-valued</b>	<b>property set GUID/property ID</b>	<b>source: XMP property or pCOS path</b>
<b>XMP Paged-Text</b>				
PDFlib.TETPDFIFilter.xmpTPg.NPages	Int32	no	7A9EB492-35AB-49FE-B364-A21FC9575C28/2	xmpTPg:NPages
PDFlib.TETPDFIFilter.xmpTPg.PlateNames	String	yes	7A9EB492-35AB-49FE-B364-A21FC9575C28/3	xmpTPg:PlateNames
<b>Adobe PDF</b>				
PDFlib.TETPDFIFilter.pdf.Keywords	String	no	17EB8447-FC9B-4D4D-81DF-31E9AA770CBF/2	pdf:Keywords
PDFlib.TETPDFIFilter.pdf.PDFVersion	String	no	17EB8447-FC9B-4D4D-81DF-31E9AA770CBF/3	pdf:PDFVersion
PDFlib.TETPDFIFilter.pdf.Producer	String	no	17EB8447-FC9B-4D4D-81DF-31E9AA770CBF/4	pdf:Producer
<b>XMP image metadata property set collection (from the XMP 2005 specification)</b>				
<b>Photoshop</b>				
PDFlib.TETPDFIFilter.images.photoshop.AuthorsPosition	String	yes	C9Fo8C60-189D-11DD-8441-0002A5D5C51B/2	photoshop:AuthorsPosition
PDFlib.TETPDFIFilter.images.photoshop.CaptionWriter	String	yes	C9Fo8C60-189D-11DD-8441-0002A5D5C51B/3	photoshop:CaptionWriter
PDFlib.TETPDFIFilter.images.photoshop.Category	String	yes	C9Fo8C60-189D-11DD-8441-0002A5D5C51B/4	photoshop:Category
PDFlib.TETPDFIFilter.images.photoshop.City	String	yes	C9Fo8C60-189D-11DD-8441-0002A5D5C51B/5	photoshop:City
PDFlib.TETPDFIFilter.images.photoshop.Country	String	yes	C9Fo8C60-189D-11DD-8441-0002A5D5C51B/6	photoshop:Country
PDFlib.TETPDFIFilter.images.photoshop.Credit	String	yes	C9Fo8C60-189D-11DD-8441-0002A5D5C51B/7	photoshop:Credit
PDFlib.TETPDFIFilter.images.photoshop.DateCreated	DateTime	yes	C9Fo8C60-189D-11DD-8441-0002A5D5C51B/8	photoshop:DateCreated
PDFlib.TETPDFIFilter.images.photoshop.Headline	String	yes	C9Fo8C60-189D-11DD-8441-0002A5D5C51B/9	photoshop:Headline
PDFlib.TETPDFIFilter.images.photoshop.Instructions	String	yes	C9Fo8C60-189D-11DD-8441-0002A5D5C51B/10	photoshop:Instructions
PDFlib.TETPDFIFilter.images.photoshop.Source	String	yes	C9Fo8C60-189D-11DD-8441-0002A5D5C51B/11	photoshop:Source
PDFlib.TETPDFIFilter.images.photoshop.State	String	yes	C9Fo8C60-189D-11DD-8441-0002A5D5C51B/12	photoshop:State
PDFlib.TETPDFIFilter.images.photoshop.SupplementalCategories	String	yes	C9Fo8C60-189D-11DD-8441-0002A5D5C51B/13	photoshop:SupplementalCategories
PDFlib.TETPDFIFilter.images.photoshop.TransmissionReference	String	yes	C9Fo8C60-189D-11DD-8441-0002A5D5C51B/14	photoshop:TransmissionReference
PDFlib.TETPDFIFilter.images.photoshop.Urgency	Int32	yes	C9Fo8C60-189D-11DD-8441-0002A5D5C51B/15	photoshop:Urgency

Table A.1 Property handling in TET PDF IFilter: predefined property set collections

<b>property name for Windows Search and Indexing Service (IS); also used to derive a prefix if the property is indexed as text</b>	<b>data type</b>	<b>multi- valued</b>	<b>property set GUID/property ID</b>	<b>source: XMP property or pCOS path</b>
<b>Internal property set collection</b>				
<i>PDFlib.TETPDFFilter.version</i>	<i>String</i>	<i>no</i>	<i>007867Fo-C59B-43FC-AB1E-8EEE77057254/2</i>	<i>4.0 (fixed)</i>
<i>PDFlib.TETPDFFilter.tetversion</i>	<i>String</i>	<i>no</i>	<i>007867Fo-C59B-43FC-AB1E-8EEE77057254/3</i>	<i>4.0 (fixed)</i>
<i>PDFlib.TETPDFFilter.indextime</i>	<i>DateTime</i>	<i>no</i>	<i>007867Fo-C59B-43FC-AB1E-8EEE77057254/4</i>	<i>date and time of index run</i>
<i>PDFlib.TETPDFFilter.eval</i>	<i>Int32</i>	<i>no</i>	<i>007867Fo-C59B-43FC-AB1E-8EEE77057254/5</i>	<i>exception number if IFilter runs in evaluation mode</i>



# B Revision History

*Revision history of this manual*

<b>Date</b>	<b>Changes</b>
<i>July 22, 2010</i>	▶ <i>Updates for TET PDF IFilter 4.0 (based on TET 4.0)</i>
<i>August 06, 2008</i>	▶ <i>Updates for Search Server</i>
<i>June 16, 2008</i>	▶ <i>TET PDF IFilter 3.0 (based on TET 3.oprez)</i>
<i>June 6, 2008</i>	▶ <i>TET PDF IFilter 3.0 beta3 (based on TET 3.oprez)</i>
<i>May 09, 2008</i>	▶ <i>Initial version for TET PDF IFilter 3.0 beta2 (based on TET 3.opre1)</i>



# Index

## A

*annotations* 21

## B

*bookmarks* 22

## C

*canonical decomposition* 30

*comments* 21

*compatibility decomposition* 30

*custom properties* 42

## D

*damaged PDF* 27

*decomposition* 30

*DocOptions element* 66

*document info entries* 19, 37

## E

*encrypted PDF* 27

*evaluation version* 5

*event log* 76

## F

*file attachments* 22

*Filtering element* 66

*FiltReg.exe* 71

*folding* 28

*form fields* 21

## G

*GUID (Globally Unique Identifier)* 40

## H

*HRESULT error values* 48

## I

*IFilter Explorer* 71

*image metadata* 37

*indexing properties as text* 45

*Indexing Service* 16

*metadata* 59

*ISO 32000* 27

## L

*language detection* 24

*license key* 5, 72

*locale identifier (LCID)* 24

*LocaleId element* 66

*logging* 76

## M

*metadata* 37

*custom properties* 42

*in Indexing Service* 59

*in SharePoint* 53

*in Windows Search* 47

*multivalued properties* 44

*predefined properties* 41

*properties as text* 45

*property identification* 40

*property set collections* 41

*single-valued properties* 44

*SQL Server* 58

*vector processing for properties* 44

*Metadata element* 66

*multivalued properties* 44

## N

*normalization* 33

## P

*packages* 22

*PageOptions element* 67

*password-protected PDF* 27

*PDF versions* 27

*portfolios* 22

*predefined properties* 41

*Prefix Declaration element* 67

*Prefix Declarations element* 67

*prop command-line tool* 48

*Property element* 67

*property set collections* 41

*PropertySet element* 67

*PropertySetCollection element* 68

*protected PDF* 27

## R

*registerpropdesc.exe* 47

*repair mode for damaged PDF* 27

## **S**

*Search Server* 12

*SharePoint* 10  
    *metadata* 53

*single-valued properties* 44

*Source element* 68

*SQL Server* 13  
    *metadata* 58

## **T**

*Tet element* 68

*TetOptions element* 68

*TetPdfFilterConfig element* 68

*troubleshooting* 71

## **U**

*Unicode*  
    *decomposition* 30

*folding* 28

*normalization* 33

*Unicode mapping tables* 35

*UUID (Universally Unique Identifier)* 40

## **V**

*vector processing* 44

## **W**

*Windows Search* 7

*metadata* 47

## **X**

*XML configuration file* 63

*XML elements and attributes* 65

*XMP metadata* 21, 37

*XmpLang element* 68

*XmpLangSelector element* 68



**PDFlib GmbH**

Franziska-Bilek-Weg 9  
80339 München, Germany  
www.pdflib.com  
phone +49 • 89 • 452 33 84-0  
fax +49 • 89 • 452 33 84-99

If you have questions check the PDFlib mailing list  
and archive at [tech.groups.yahoo.com/group/pdflib](http://tech.groups.yahoo.com/group/pdflib)

**Licensing contact**

[sales@pdflib.com](mailto:sales@pdflib.com)

**Support**

[support@pdflib.com](mailto:support@pdflib.com) (*please include your license number*)

